




# 2J4445P 2J4445GP (DATASHEET)

<b>Type</b>	Combined DAB antenna
<b>Frequencies</b>	DAB (150 - 240 MHz) GPS (1575.42 MHz) GLONASS (1592 - 1610 MHz)
<b>Mounting</b>	Glass Mount
<b>Revision</b>	00



  
P. Tipul

  
D. Noble



## 1. PRODUCT SELECTOR

2J4445P	DAB/GPS L1
2J4445GP	DAB/GPS+Glonass

## 2. SPECIFICATION

### 2.1. Electrical Specifications

#### Navigation (Cable 1)

Frequencies	GPS (1575.42 MHz) GLONASS (1592 - 1610 MHz)
Impedance	50 Ohms
Noise figure	1.15 dB typ.
Polarization	RHCP
Patch size	18 x 18 x 4mm
LNA Gain	23dB at 3V; 24dB at 5V
Voltage supply	2.7 V - 5.5 V
Current	15mA - 25 mA
Power (max.)	138 mW max.

#### DAB (Cable 2)

Frequencies	DAB (150 - 240 MHz)
Impedance	50 Ohms
Noise figure	2.5 dB typ.
Polarization	Linear
LNA Gain	14dB
Voltage supply	5 V - 16 V
Current	10mA - 14 mA
Power (max.)	224 mW max.

#### Environmental

Operating temperature	-40°C to +85°C
-----------------------	----------------

### 2.2. Connection Specifications

Cable 1 (Navigation):

Connector type:	MCX male
Cable:	RG174
Cable length:	100 cm

Cable 2 (DAB):

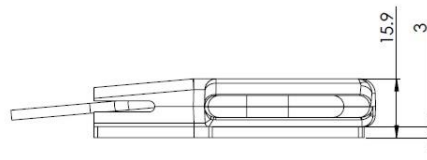
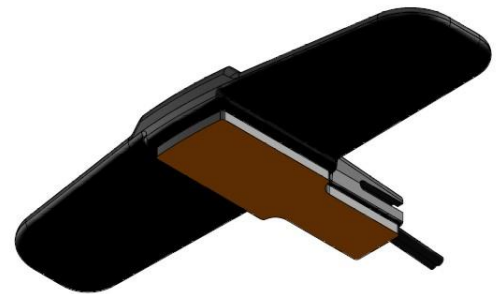
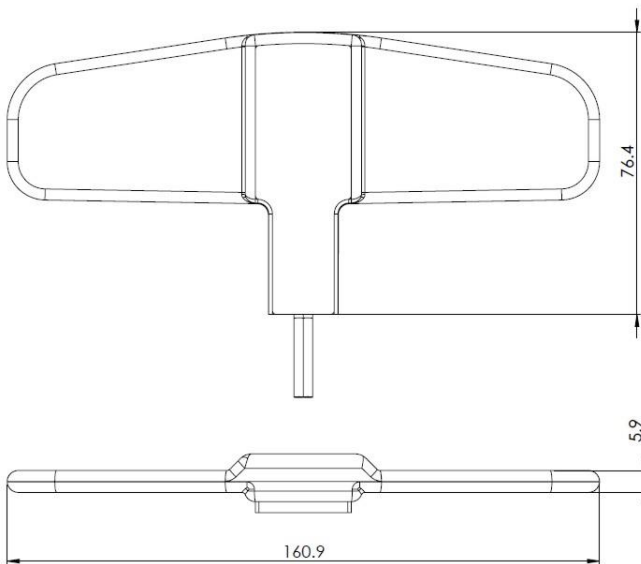
Connector type:	MCX male
Cable:	RG174
Cable length:	100 cm

For different cable length and connector type ask our sales team.



### 2.3. Mechanical Specifications and Dimensions

Material:	ABS
Max. dimensions:	76.4mm x 15.9mm x 160.9mm (L x T x W)
Weight:	195 g 'weight counted with cable above'
Colour:	Black (for different colours please ask our sales team)



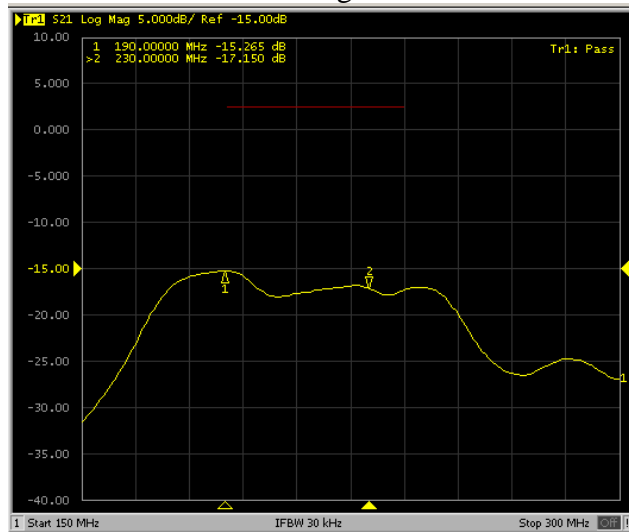


### 3. MEASUREMENT

- Tested on glass in test room
- Tested with 1m of RG174 Twin.

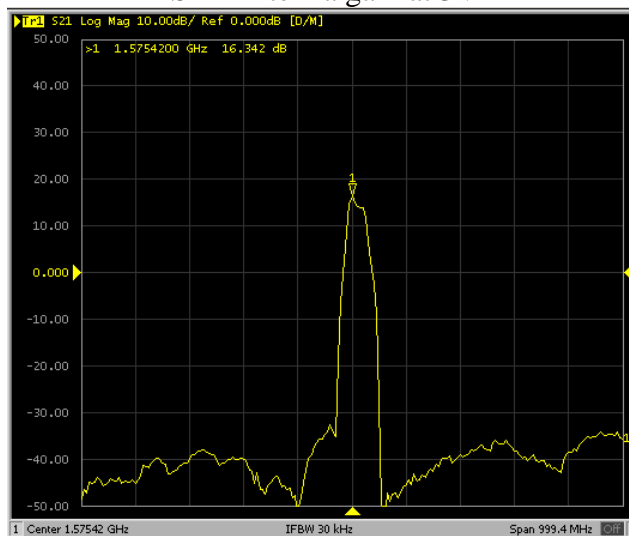
#### 3.1. DAB

S21 Antenna gain at 12V



#### 3.2. GNSS

S21 Antenna gain at 3V



## 4. IMAGES

