

# MODEL NO. : LM-1054B1KN HD LCD Monitor

## □ SPECIFICATION □

### ◆ DISPLAY SCREEN

SIZE	10.4 INCH
ACTIVE AREA	210.4(W)x 157.8(H)mm
ELEMENT	COLOR TFT LCD
RESOLUTION	800 x 600
PIXEL PITCH	0.2055 (W) x 0.2055 (H)mm

### ◆POWER SOURCE

DC 12V

### ◆POWER CONSUMPTION

10W Typ.

### ◆OPERATING TEMPERATURE

-20°C ~ 70°C

### ◆STORAGE TEMPERATURE

-20°C ~ 70°C

### ◆BRIGHTNESS

1000 Nits

### ◆CONTRAST

800 : 1

### ◆RISE TIME / FALL TIME

10/20 msTyp.

### ◆VIEWING ANGLE

Vertical +60/-70° , Horizontal : ±85°

### ◆PC INPUT

RGB Input 15 Pin D-sub x 1

### ◆VIDEO INPUT

RCA x2, 1.0 VP-P 75Ω

### ◆HDMI INPUT

HDMI x 2

### ◆USB INPUT

USB x 1

### ◆DVI INPUT

DVI x1 ( Optional )

### ◆OSD CONTROLN

Volume , Brightness , Contrast, Sharpness , Color

### ◆PLUG & PLAY

VESA DDC2B

### ◆GREEN FUNCTION

VESA DPMS

### ◆OSD CONTROL FUNCTION

Brightness, Contrast, Color, Volume, Mute

### ◆DIMENSION (W x H x D)

285.0 x 165.0 x 39.0 mm

### ◆WEIGHT

1400 ± 10 g

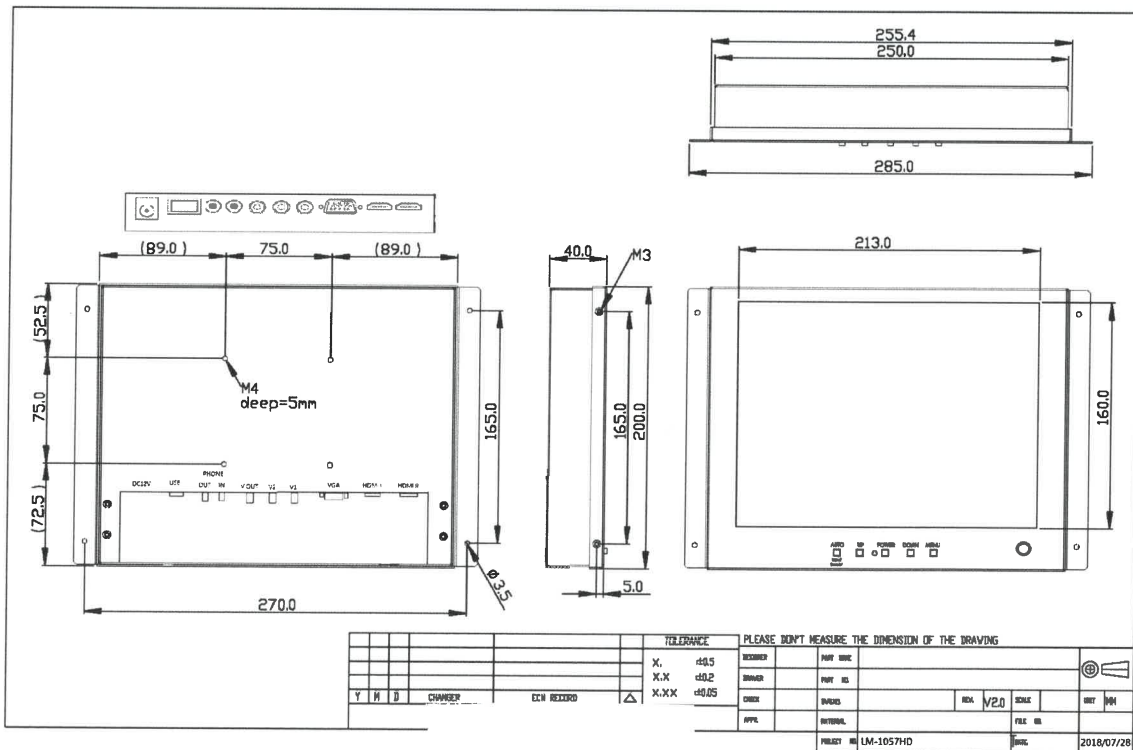
## □ FEATURES □

1. Heavy Duty 10.4" LCD
2. RCA Video x 2 Input, ( BNC Optional )
3. VGA 15Pin D-sub x1 Input
4. HDMI x 2 Inputs
5. USB x1 input
6. U/D/L/R Reverse Image Function with Remote ( Optional )
7. DVI Input ( Optional )
8. Touch Screen ( Optional )
9. Brightness Control Knob on Front Panel

□ PICTURE □



□ MECHANICAL DRAWING □



□ VGA SUPPORT TABLE □

Resolution	Horiz. Freq.(KHz)	Vert. Freq.(Hz)	Polarity
640X350	31.46	70	+/-
	37.86	85	+/-
720X350	31.46	70	+/-
	37.86	85	+/-
640X400	31.46	70	-/+
	37.93	85	-/+
	24.82	56	-/+
720X400	31.46	70	-/+
	37.86	85	-/+
640X480	31.46	59.9	-/-
	35.00	66.6	+/-
	37.86	72.8	-/-
	37.50	75.0	-/-
	43.27	85.0	-/-
800X600	35.15	56.2	+/+
	37.87	60.3	+/+
	48.07	72.2	+/+
	46.87	75.0	+/+
	44.40	70.0	+/+
	53.67	85.0	+/+
832X624	49.72	74.5	-/-
1024X768	48.36	60.0	-/-
	56.47	70.1	-/-
	58.08	72.9	
	60.02	75.0	+/+
	68.68	84.9	+/+
1152X864	54.90	60.0	
	64.19	70.2	+/+
	67.50	75.0	-/-
	76.30	80.0	
	77.09	84.9	
1280X1024	64.60	59.9	+/+
	63.98	60.0	-/-
	74.40	59.3	
	78.72	74.0	
	79.97	75.0	