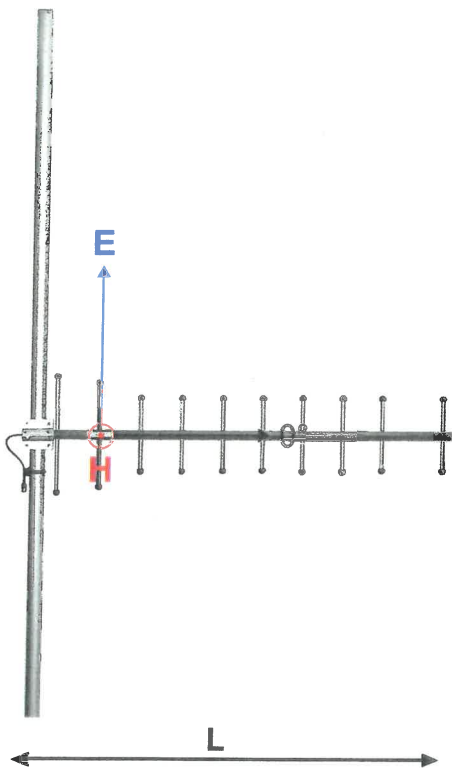
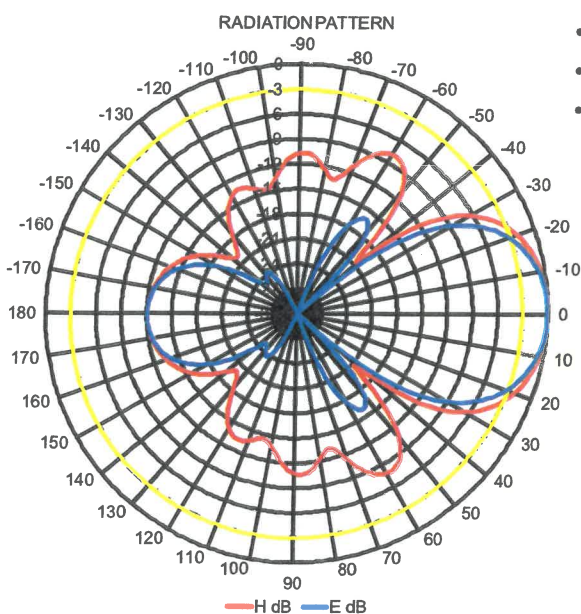


FREQUENCY INDEPENDENT DATA

Description: directional yagi
Frequency: 326-353 MHz, 336-364 MHz, 365-395 MHz, 380-410 MHz, 405-440 MHz, 440-475 MHz, 830-890 MHz, 880-960 MHz
Impedance: 50 ohm
Gain: 12 dBi
H -3 dB: 46°
E -3 dB: 39°
F/B: 12 dB
Polarization: vertical/horizontal
Connector: N-female/TNC-female
VSWR: < 1.5
Radome: UV resistant ABS/FG, RAL 7012, PU foam filling copper
Radiator:
Passive elements: coated aluminium
Attachment: Ø 35-60 mm, aluminium alloy bracket, stainless steel V-bolts and self-locking nuts
Lightning protection: DC-short circuited
Temperature: -40°C - +80°C
IP: 67



- combination of durability, light weight and low wind load
- radome enclosed radiator
- IP67 proof construction
- all electromechanics moulded inside of closed cell PU foam
- DC shorted feed point
- integrated impedance compensation
- integrated RF choke



CAY+++++ DIRECTIONAL YAGI



RoHS
Compliant

CompleTech
ComAnt[®]-antennas by CompleTech, Finland