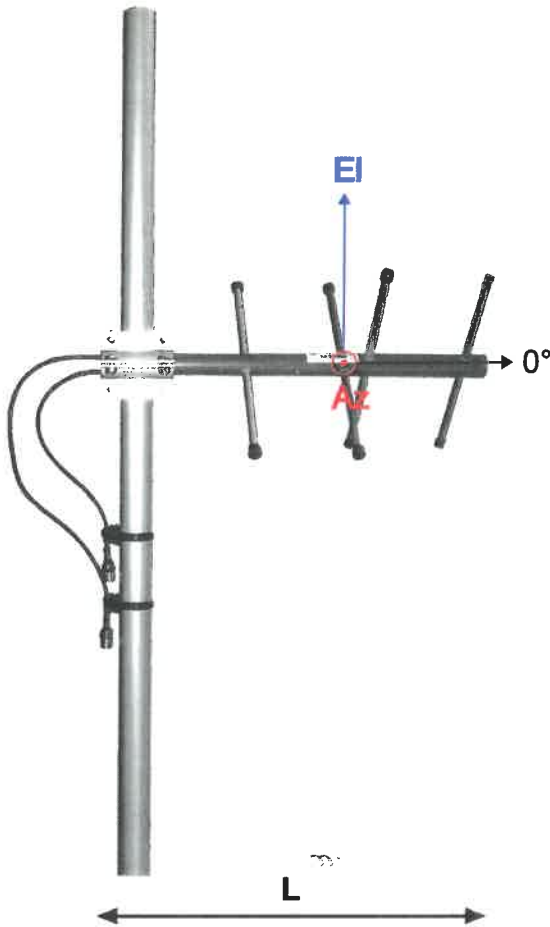


# ComAnt<sup>®</sup> Communications Antennas



## FREQUENCY INDEPENDENT DATA

Description: cross-polarized yagi, dual feed, physically quarter wavelength along the boom phased

Frequency: 380-410 MHz, 405-440 MHz, 440-475 MHz, 791-862 MHz, 830-890 MHz, 880-960 MHz

Impedance: 50 ohm

Gain: 6/6 dBi

Az -3 dB: 140/103°

EI -3 dB: 86/97°

F/B: 12/11 dB

Polarization: circular/slanted

Isolation: 30 dB

Connector: 2\*N-female/2\*TNC-female

VSWR: < 1.5

Radome: UV resistant ABS/FG, RAL 7012, PU foam filling copper

Radiator: coated aluminium

Passive elements: coated aluminium

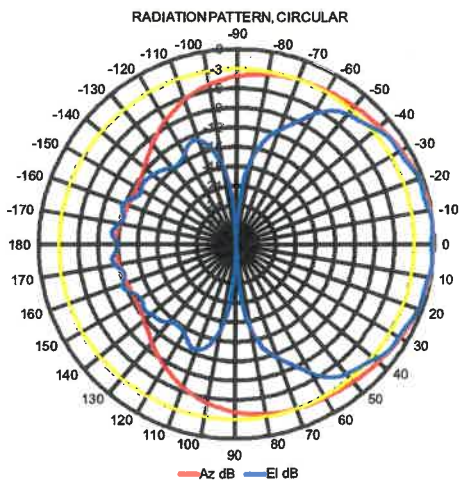
Attachment: Ø 35-60 mm, aluminium alloy bracket, stainless steel V-bolts and self-locking nuts

Lightning protection: DC-short circuited

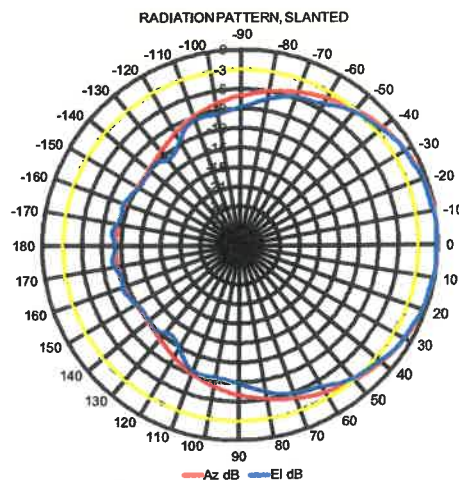
Temperature: -40°C - +80°C

IP: 67

- combination of durability, light weight and low wind load
- radome enclosed radiator
- IP67 proof construction
- all electromechanics moulded inside of closed cell PU foam
- DC shorted feed point
- integrated impedance compensation
- integrated RF choke



CS-power splitter required in circular mode



RoHS  
Compliant

CompleTech  
ComAnt<sup>®</sup> antennas by CompleTech, Finland

208-568

CAX CROSS-POLARIZED YAGI