

ComAnt[®] Communications Antennas

FREQUENCY INDEPENDENT DATA

Description: cross-polarized yagi, dual feed, physically quarter wavelength along the boom phased

Frequency: 380-410 MHz, 405-440 MHz, 440-475 MHz, 791-862 MHz, 830-890 MHz, 880-960 MHz

Impedance: 50 ohm

Gain: 8/8 dBi

Az -3 dB: 69/68°

EI -3 dB: 68/65°

F/B: 12/12 dB

Polarization: circular/slanted

Isolation: 30 dB

Connector: 2*N-female/2*TNC-female

VSWR: < 1.5

Radome: UV resistant ABS/FG, RAL 7012, PU foam filling copper

Radiator:

Passive

elements:

Attachment:

coated aluminium
 Ø 35-60 mm, aluminium alloy
 bracket, stainless steel V-
 bolts and self-locking nuts

Lightning

protection:

DC-short circuited

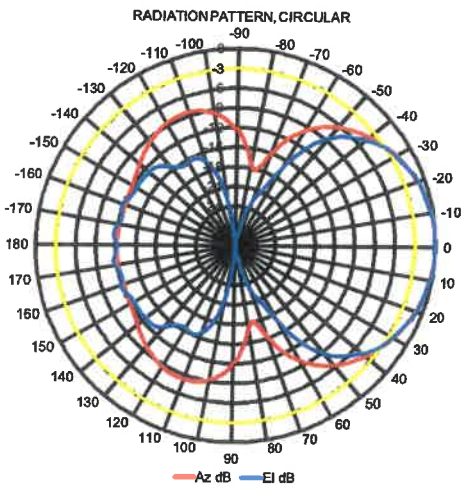
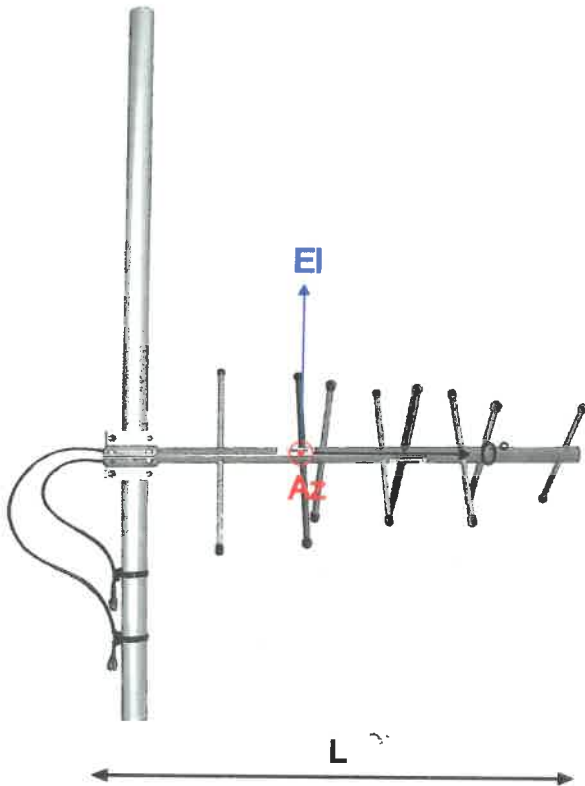
Temperature:

-40°C - +80°C

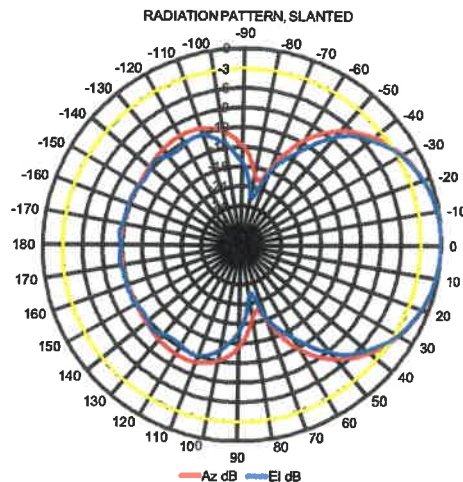
IP:

67

- combination of durability, light weight and low wind load
- radome enclosed radiator
- IP67 proof construction
- all electromechanics moulded inside of closed cell PU foam
- DC shorted feed point
- integrated impedance compensation
- integrated RF choke



CS-power splitter required in circular mode



RoHS
Compliant

CompleTech
ComAnt[®] -antennas by CompleTech, Finland

CAX+ CROSS-POLARIZED YAGI

208-569