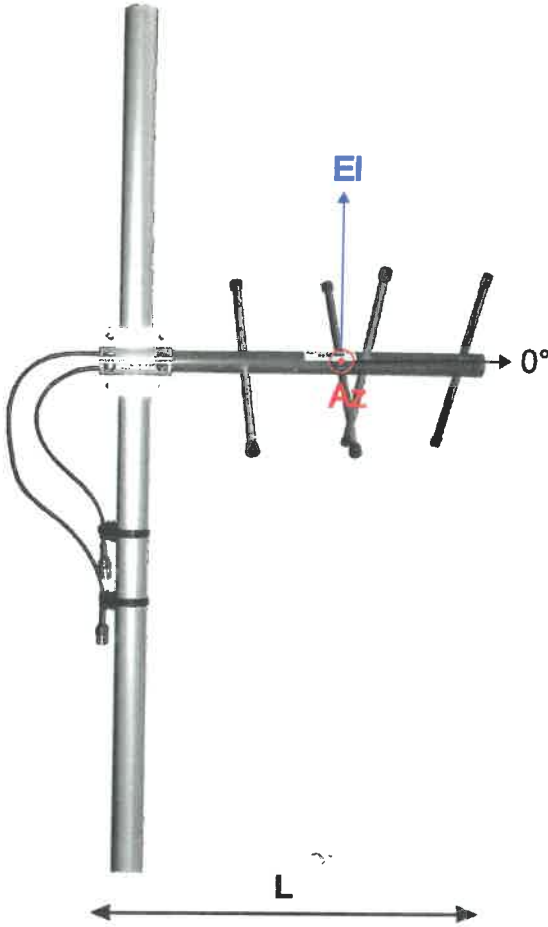


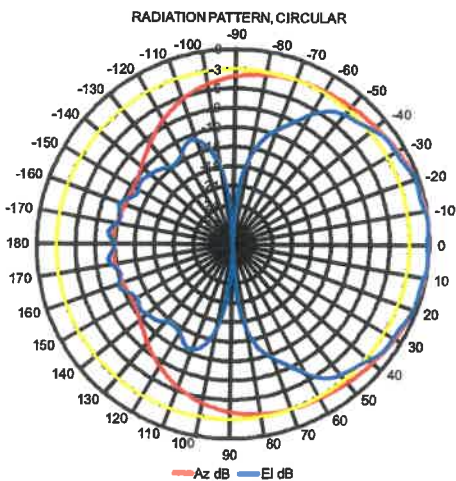
ComAnt[®] Communications Antennas



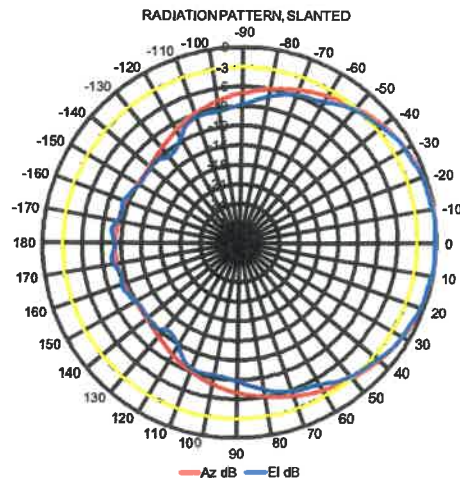
FREQUENCY INDEPENDENT DATA

Description: cross-polarized yagi, dual feed, physically quarter wavelength along the boom phased
Frequency: 380-410 MHz, 405-440 MHz, 440-475 MHz, 791-862 MHz, 830-890 MHz, 880-960 MHz
Impedance: 50 ohm
Gain: 6/6 dBi
Az -3 dB: 140/103°
EI -3 dB: 86/97°
F/B: 12/11 dB
Polarization: circular/slanted
Isolation: 30 dB
Connector: 2*N-female/2*TNC-female
VSWR: < 1.5
Radome: UV resistant ABS/FG, RAL 7012, PU foam filling copper
Radiator:
Passive elements: coated aluminium
Attachment: Ø 35-60 mm, aluminium alloy bracket, stainless steel V-bolts and self-locking nuts
Lightning protection: DC-short circuited
Temperature: -40°C - +80°C
IP: 67

- combination of durability, light weight and low wind load
- radome enclosed radiator
- IP67 proof construction
- all electromechanics moulded inside of closed cell PU foam
- DC shorted feed point
- integrated impedance compensation
- integrated RF choke



CS-power splitter required in circular mode



RoHS
Compliant

CompleTech
ComAnt[®] -antennas by CompleTech, Finland

CAX CROSS-POLARIZED YAGI

208-571