

### FREQUENCY INDEPENDENT DATA

**Description:** cross-polarized yagi, dual feed, physically quarter wavelength along the boom phased

**Frequency:** 380-410 MHz, 405-440 MHz, 440-475 MHz, 791-862 MHz, 830-890 MHz, 880-960 MHz

**Impedance:** 50 ohm

**Gain:** 8/8 dBi

**Az -3 dB:** 69/68°

**Ei -3 dB:** 68/65°

**F/B:** 12/12 dB

**Polarization:** circular/slanted

**Isolation:** 30 dB

**Connector:** 2\*N-female/2\*TNC-female

**VSWR:** < 1.5

**Radome:** UV resistant ABS/FG, RAL 7012, PU foam filling copper

**Radiator:** coated aluminium

**Passive elements:** Ø 35-60 mm, aluminium alloy

**Attachment:** bracket, stainless steel V-bolts and self-locking nuts

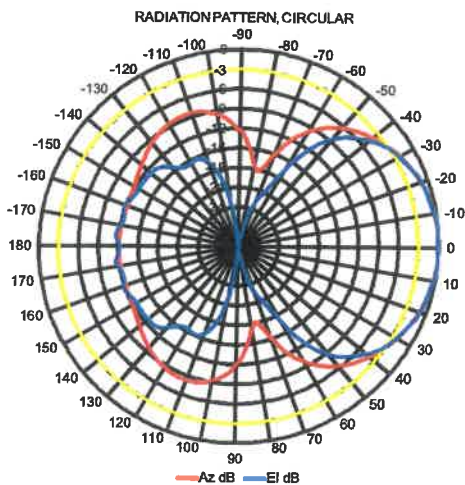
**Lightning protection:** DC-short circuited

**Temperature:** -40°C - +80°C

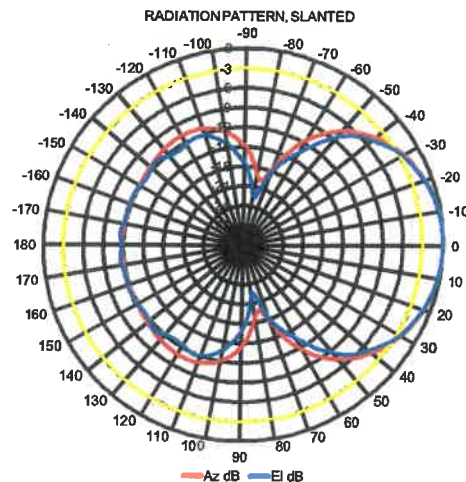
**IP:** 67

- combination of durability, light weight and low wind load
- radome enclosed radiator
- IP67 proof construction
- all electromechanics moulded inside of closed cell PU foam
- DC shorted feed point
- integrated impedance compensation
- integrated RF choke

**CAX+ CROSS-POLARIZED YAGI**



CS-power splitter required in circular mode



**RoHS**  
Compliant

**CompleTech**  
ComAnt<sup>®</sup> antennas by CompleTech, Finland