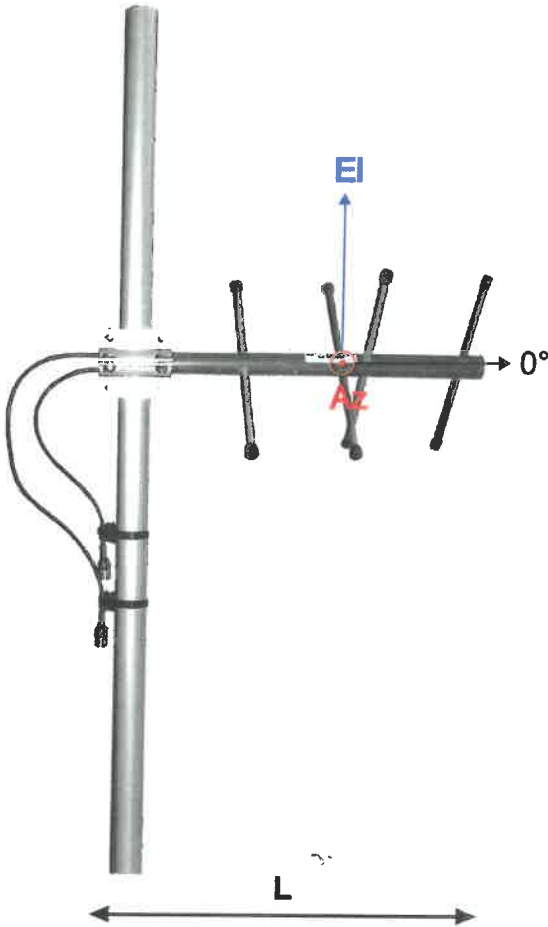


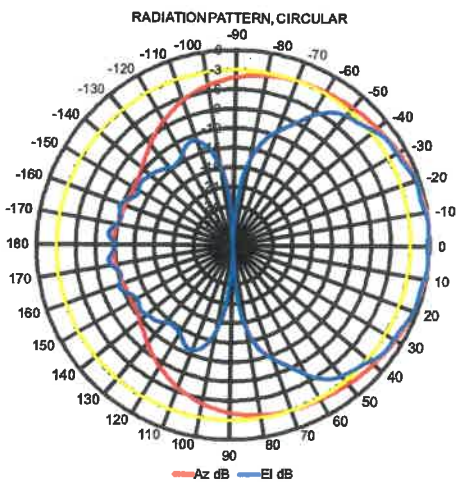
# ComAnt<sup>®</sup> Communications Antennas



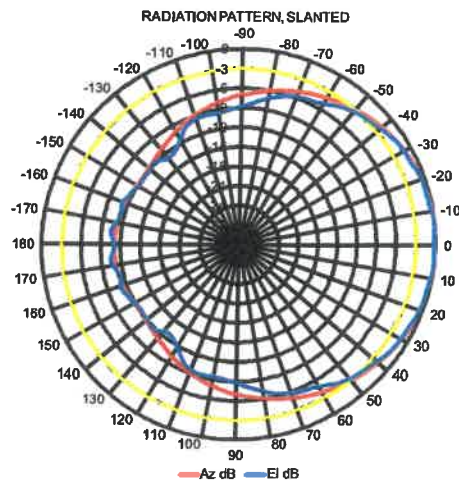
## FREQUENCY INDEPENDENT DATA

Description:	cross-polarized yagi, dual feed, physically quarter wavelength along the boom phased
Frequency:	380-410 MHz, 405-440 MHz, 440-475 MHz, 791-862 MHz, 830-890 MHz, 880-960 MHz
Impedance:	50 ohm
Gain:	6/6 dBi
Az -3 dB:	140/103°
EI -3 dB:	86/97°
F/B:	12/11 dB
Polarization:	circular/slanted
Isolation:	30 dB
Connector:	2*N-female/2*TNC-female
VSWR:	< 1.5
Radome:	UV resistant ABS/FG, RAL 7012, PU foam filling
Radiator:	copper
Passive elements:	coated aluminium
Attachment:	Ø 35-60 mm, aluminium alloy bracket, stainless steel V-bolts and self-locking nuts
Lightning protection:	DC-short circuited
Temperature:	-40°C - +80°C
IP:	67

- combination of durability, light weight and low wind load
- radome enclosed radiator
- IP67 proof construction
- all electromechanics moulded inside of closed cell PU foam
- DC shorted feed point
- integrated impedance compensation
- integrated RF choke



CS-power splitter required in circular mode



**RoHS**  
Compliant

**CompleTech**  
ComAnt<sup>®</sup> -antennas by CompleTech, Finland

**CAX CROSS-POLARIZED YAGI**

208-574