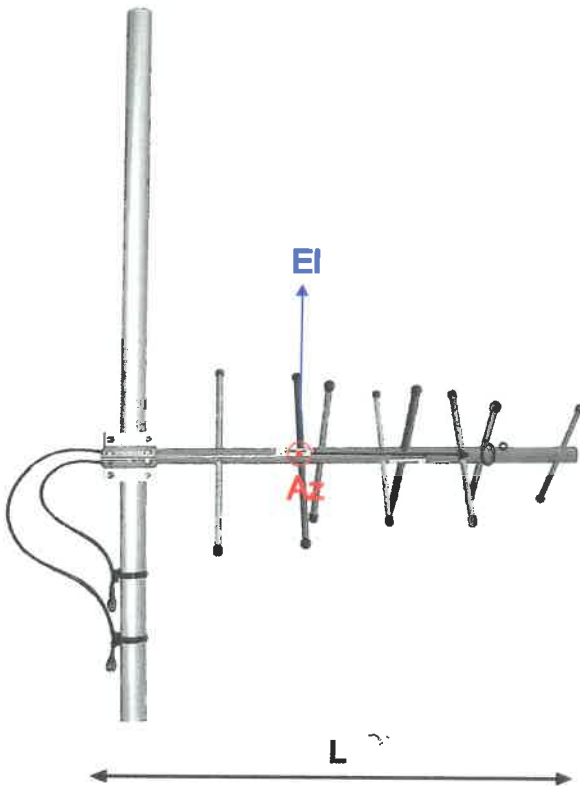


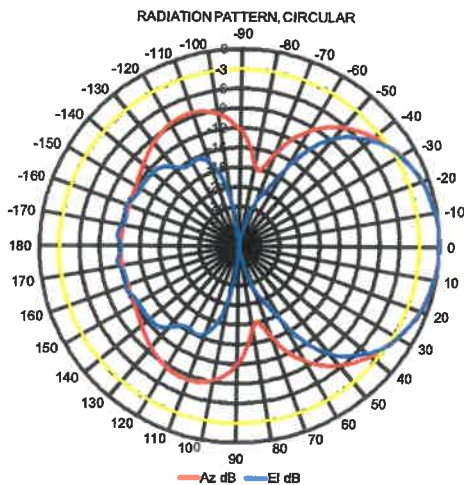
# ComAnt<sup>®</sup> Communications Antennas

## FREQUENCY INDEPENDENT DATA

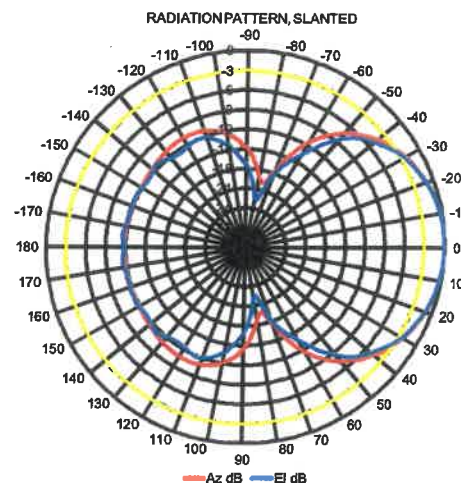


**Description:** cross-polarized yagi, dual feed, physically quarter wavelength along the boom phased  
**Frequency:** 380-410 MHz, 405-440 MHz, 440-475 MHz, 791-862 MHz, 830-890 MHz, 880-960 MHz  
**Impedance:** 50 ohm  
**Gain:** 8/8 dBi  
**Az -3 dB:** 69/68°  
**Ei -3 dB:** 68/65°  
**F/B:** 12/12 dB  
**Polarization:** circular/slanted  
**Isolation:** 30 dB  
**Connector:** 2\*N-female/2\*TNC-female  
**VSWR:** < 1.5  
**Radome:** UV resistant ABS/FG, RAL 7012, PU foam filling copper  
**Radiator:** Passive elements: coated aluminium  
**Attachment:** Ø 35-60 mm, aluminium alloy bracket, stainless steel V-bolts and self-locking nuts  
**Lightning protection:** DC-short circuited  
**Temperature:** -40°C - +80°C  
**IP:** 67

- combination of durability, light weight and low wind load
- radome enclosed radiator
- IP67 proof construction
- all electromechanics moulded inside of closed cell PU foam
- DC shorted feed point
- integrated impedance compensation
- integrated RF choke



CS-power splitter required in circular mode



**CAX+ CROSS-POLARIZED YAGI**



**RoHS**  
Compliant

**CompleTech**  
ComAnt<sup>®</sup> -antennas by CompleTech, Finland

208-581