

Szélessávú, nagy nyereségű, irányított antenna, 470 - 2700 MHz
High-gain, broadband, directional antenna, 470 - 2700 MHz

Specifikációk/Specifications

Elektromos paraméterek / Electrical data

Nyereség: 430-480 MHz max. 8.5 dBi
Gain: 790-960 MHz max. 11.3 dBi
1710-2700 MHz max. 10.0 dBi

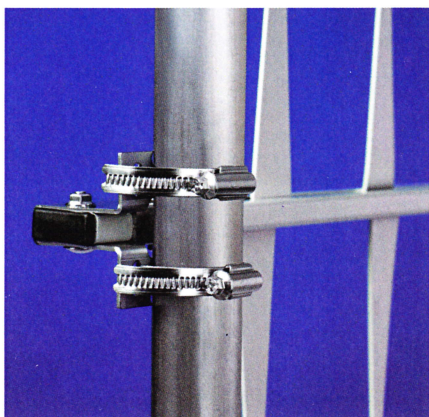
Frekvencia sávok: 430 - 480 MHz
Frequency bands: 790 - 960 MHz
1710 - 2700 MHz

VSWR: < 2.0:1
Teljesítmény/ Power: 10W
Impedancia/ Impedance: 50 Ω
Konnektor/ Connector: SMA female / male
Polarizáció/ Polarisation: Vertikális
Irányítottság/ Directivity: 60°
E/H viszony/ F/B ratio: >15dB

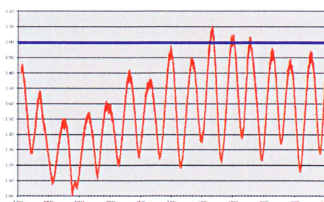
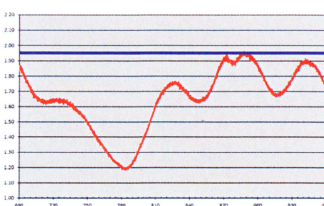
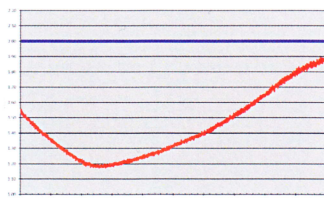
Mechanikai adatok / Mechanical data

Alapanyag/Material: Ötvözött alumínium
Aluminium alloy
Tartó bilincs/Clamp: Korrozíóálló acél
Stainless steel
Kábel/ Cable: RG 223
Műanyag alkatrészek/ Plastic Parts: ABS, Polycarbonate
Árbcó átmérő/ Diameter mast: 30 - 60 mm
Méretek/ Dimension: 200 x 1000 x 50

Tesztelve: IEC68-2-1:Ab/Ad
IEC68-2-2:Bb/Bd
IEC68-2-14:Na
IEC68-2-56:Cb
IEC68-2-11:Ka

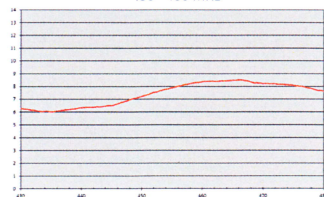


VSWR

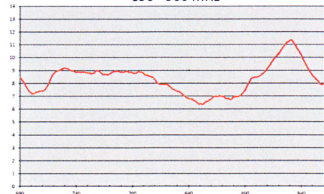


Antenna Gain

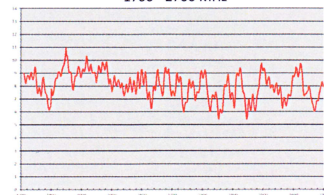
430 - 480 MHz



690 - 960 MHz

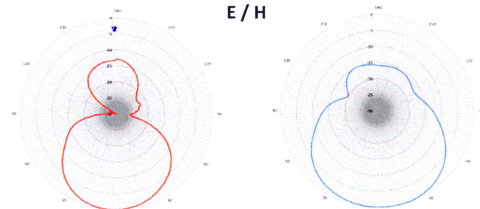


1700 - 2700 MHz



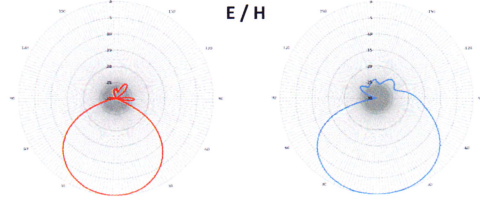
450 MHz

E / H



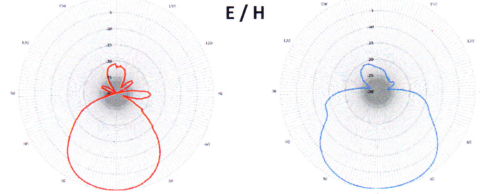
700 MHz

E / H



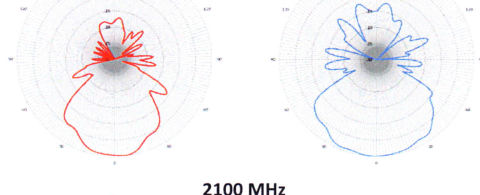
900 MHz

E / H



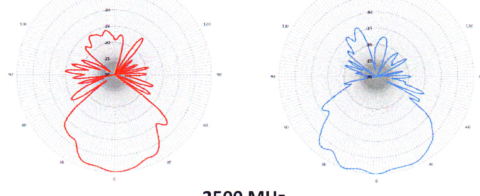
1800 MHz

E / H



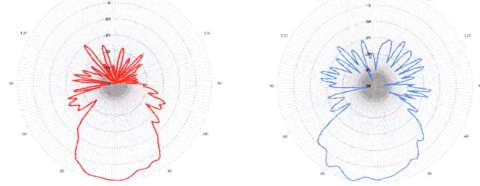
2100 MHz

E / H



2500 MHz

E / H



CARANT fenntartja a mindenemű változtatás jogát, akár előzetes bejelentés nélkül.
CARANT We reserve the right to make changes.