

MiMo Directional Antenna

WMM8G-7-38-[VAR]

PANORAMA ANTENNAS



WMM8G-7-38

Supports MiMo & diversity across 3G,4G & 5G

Two wideband elements with gain

Durable wall mount housing

Suitable for mast, wall and desk mounting

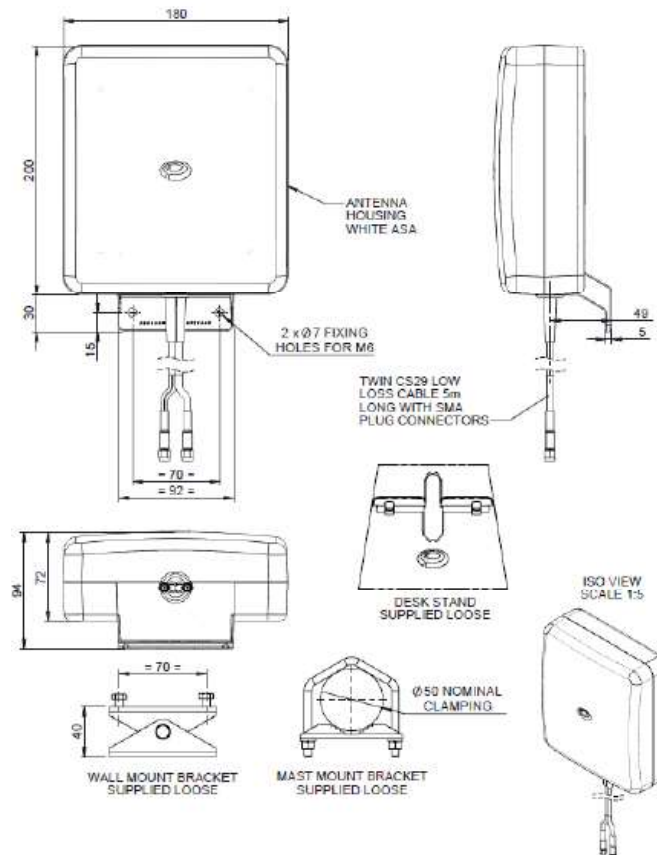
The WMM8G-7-38 antenna is a high directional gain 2x2 MiMo signal boosting antenna for 2G, 3G,4G and many 5G networks. Incorporating two separately fed wideband elements in a single housing the WMM8G-7-38 is equipped to provide client side MiMo and diversity support for 2G, 3G, 4G and many 5G networks. With 6dBi of peak gain at 698-960MHz and 9dBi peak gain at 1710-3800MHz the WMM8G-7-38 provides extra gain for next generation networks.

The rugged, weather resistant housing is designed for wall mounting and wall and mast mount brackets are provided. Supplied with fitted low loss double shielded twin cable the WMM8G-7-38 minimises exposed connector joints and simplifies cable management for easy installation.

The WMM8G-7-38 is an cost effective value added product for network operators and service providers ensuring a stable link with improved data rates for subscribers thereby improving satisfaction and retention.

Technical Drawing

WMM8G-7-38-5SP Shown



Waiver: The data given above is indicative of the performance of the product/s under particular conditions and does not imply a guarantee of performance. These specifications are subject to change without notice. Copyright © Panorama Antennas Ltd. All rights reserved.

MiMo Directional Antenna

WMM8G-7-38-[VAR]

PANORAMA ANTENNAS

Product Data

| Part No. | | WMM8G-7-38-5SP | WMM8G-7-38-03NJ |
|---|--------------------------------------|--------------------------------------|-----------------|
| Electrical Data | | | |
| Frequency Range (MHz) | Antenna 1 | 698-960/1710-2700/3400-3800 | |
| | Antenna 2 | 698-960/1710-2700/3400-3800 | |
| Operational bands | 2G / 3G / 4G / 5G | | |
| Radiation pattern | Directional | | |
| Nominal Polarisation | +/- 45deg Vertical | | |
| Peak Gain (excl cable loss)+ | 698-960 MHz | 6dBi | |
| | 1710-2170 MHz | 9dBi | |
| | 2396-2700 MHz | 9dBi | |
| | 3400-3800MHz | 9dBi | |
| Efficiency - excluding cable loss (all bands) | > 60% | | |
| Correlation co-efficient (all bands) | < 0.1 | | |
| Max input power (W) | 20 Watts | | |
| Nominal Impedance | 50Ω | | |
| Mechanical Data | | | |
| Dimensions (mm) | Height | 230 (9") | |
| | Width | 180 (7.1") | |
| | Depth | 94 (3.7") | |
| Operating temp (°C) | -30° / +80°C (-40° / 176°F) | | |
| Material | U.V. stable, impact resistant ASA | | |
| Colour | RAL9010 (Pure White) | | |
| Weight (g) | 955 | | |
| Ingress Protection | IP 65 | | |
| Mounting Data | | | |
| Fixing | Wall mount / mast mount / desk mount | | |
| Mounting bracket material | Stainless steel / Aluminium | | |
| Pole diameter (mm) | 20-50 / (0.78 - 1.96") | | |
| Cable Data | | | |
| Type | 2 x CS29 Coax (double shielded RG58) | 2 x CS29 Coax (double shielded RG58) | |
| Diameter (mm) | 5 (0.2") | 5 (0.2") | |
| Length (m) | 5 (16') | 0.3 (12") | |
| Termination | 2 x SMA (m) | 2 x N(f) | |

+ Swept peak gain simulated in CST Microwave studio for each element excluding cable loss

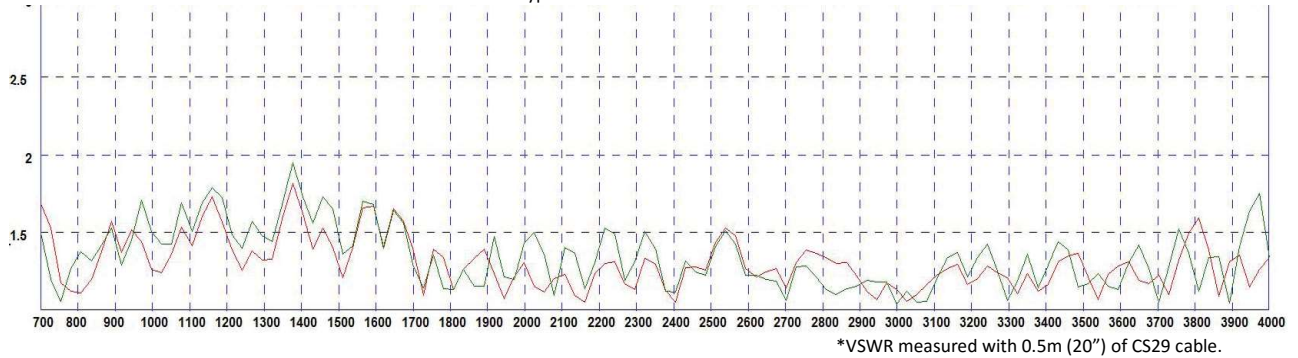
Waiver: The data given above is indicative of the performance of the product/s under particular conditions and does not imply a guarantee of performance. These specifications are subject to change without notice. Copyright © Panorama Antennas Ltd. All rights reserved.

MiMo Directional Antenna

WMM8G-7-38-[VAR]

VSWR

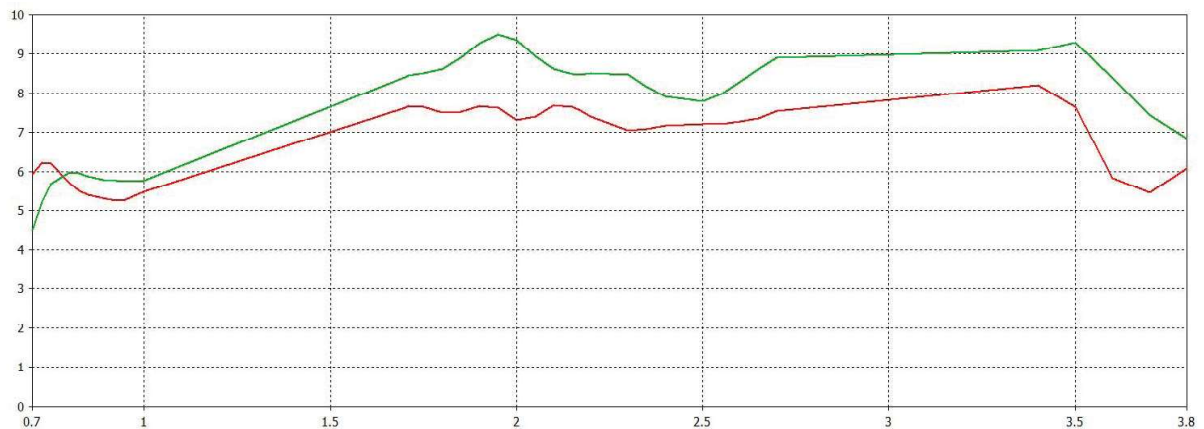
Typical VSWR Elements 1 & 2 *



Typical Isolation Elements 1 & 2 *



Swept Peak Gain Elements 1 & 2 *



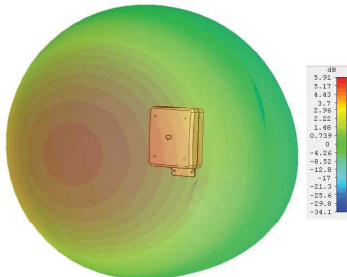
Waiver: The data given above is indicative of the performance of the product/s under particular conditions and does not imply a guarantee of performance. These specifications are subject to change without notice. Copyright © Panorama Antennas Ltd. All rights reserved.

MiMo Directional Antenna

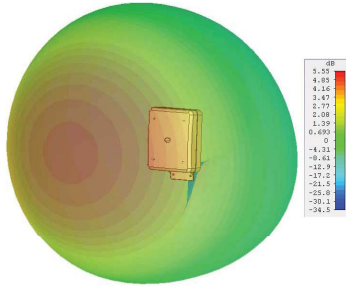
WMM8G-7-38-[VAR]

Gain Plots

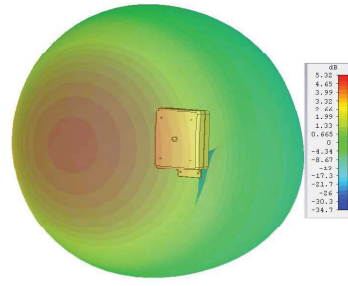
3D Gain Plot (750MHz)



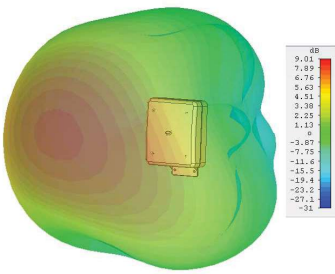
3D Gain Plot (850MHz)



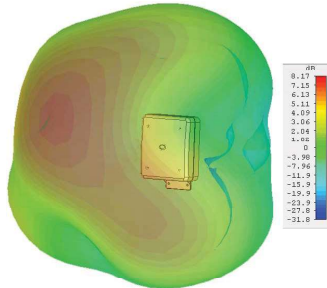
3D Gain Plot (950MHz)



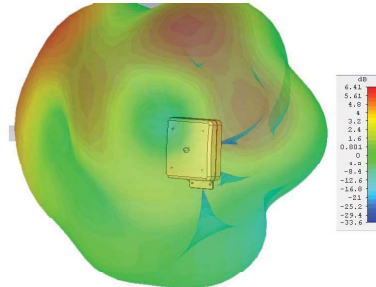
3D Gain Plot (1800MHz)



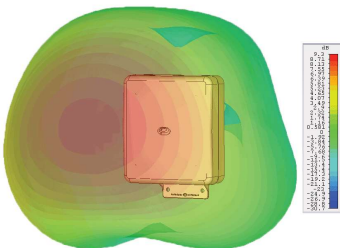
3D Gain Plot (2000 MHz)



3D Gain Plot (2600 MHz)



3D Gain Plot (3600MHz)



*WMM8G-7-38 3D Patterns show realised gain both elements fed modelled in CST Microwave Studio without additional cable.

Waiver: The data given above is indicative of the performance of the product/s under particular conditions and does not imply a guarantee of performance. These specifications are subject to change without notice. Copyright © Panorama Antennas Ltd. All rights reserved.