

ROHS COMPLIANCE

DATE

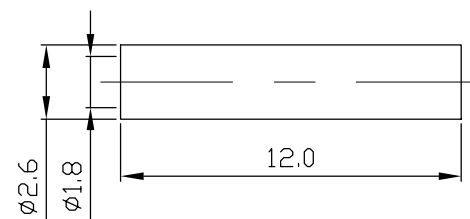
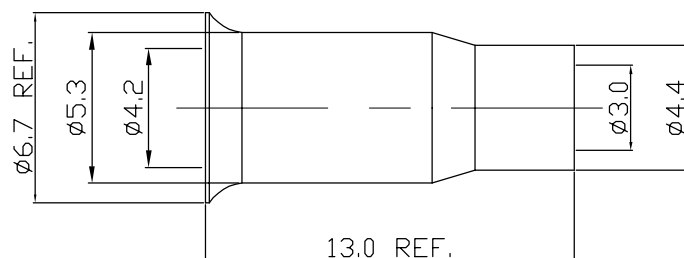
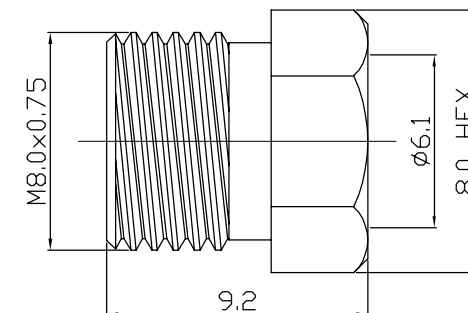
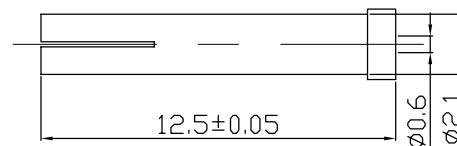
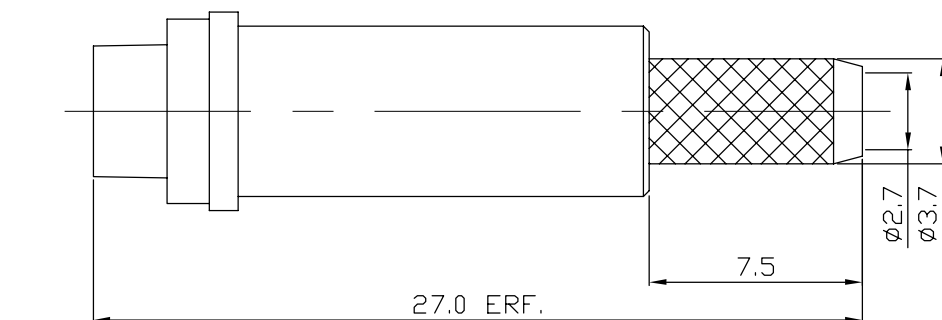
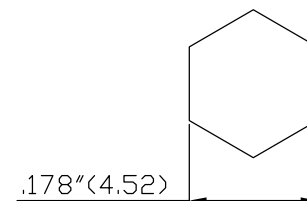
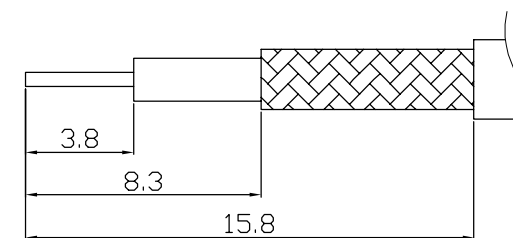
DESCRIPTION

REV

16.02.18

NEW RELEASE

A

Recommended Crimped  
Dimensions for Center PinRecommended Crimped  
Dimensions for FerruleRecommended Cable  
Stripping Dimensions

6	FERRULE	1	BRASS	NICKEL
5	PLASTIC TUBE	1	POM	WHITE
4	NUT	1	BRASS	NICKEL
3	PIN	1	BRASS	GOLD
2	INSULATOR	1	POM	WHITE
1	BODY1	1	BRASS	NICKEL
NO	Description	Q'ty	Material	Finish

MAJOR DIMENSIONS  
UNLESS OTHERWISE  
NOTED TOLERANCES  
0.5-6 $\pm 0.2$   
6-30 $\pm 0.4$   
30-120 $\pm 0.6$   
ANGLES $\pm 5^\circ$

SCALE 3.5:1 UNIT MM

APPROVED BY

CHECKED BY

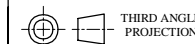
DRAWING BY

DATE

2020/08/04

OLD DRAWING NO

CH-8001-D

THIRD ANGLE  
PROJECTION

DRAWING NO

FE-001-1DGN-D

TITLE

FME FEMALE CRIMP FOR RG 174/U



WEIJE ELECTRONICS CO., LTD.

REV.

A