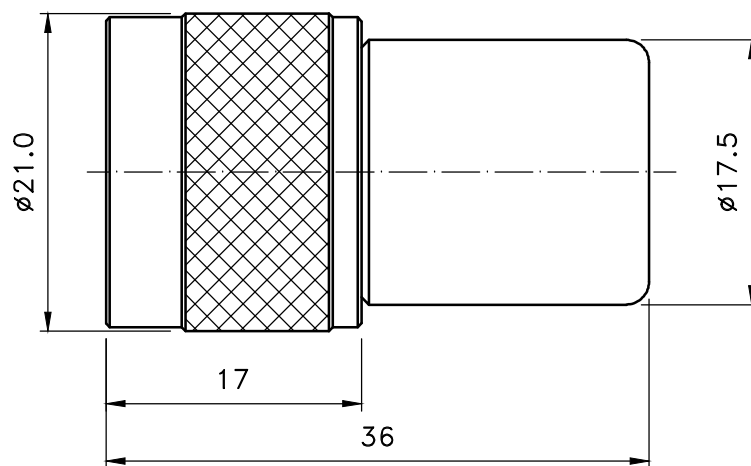


| REV | DATE     | DESCRIPTION | DRAWN |
|-----|----------|-------------|-------|
| △   | 06/11/20 | 已校正         |       |



ELECTRICAL :  
 IMPEDANCE : 50 ohm  
 FREQUENCY RANGE : 0~6 GHz  
 VSWR : ≤1.3  
 INSULATION VOLTAGE : 1000V  
 RATED DISSIPATION : 0.5W

NOTE:  
 CENTER PIN GOLD PLATING OVER NICKEL STRIKE  
 BODY NICKEL PLATING OVER NICKEL STRIKE  
 BRASS AND PTFE PER SGS  
 FINISH PLATING THICKNESS IN MICRO-INCHES  
 COPPER PARTS AUTOMATIC CNC MANUFACTURING

| 4  | SHELL       | BRASS    | NICKEL | 1    |
|----|-------------|----------|--------|------|
| 3  | DIELECTRIC  | PTFE     | NONE   | 1    |
| 2  | PIN         | BRASS    | GOLD   | 1    |
| 1  | BODY        | BRASS    | NICKEL | 1    |
| NO | DESCRIPTION | MATERIAL | FINISH | Q'ty |

**Prohibit re-circulating**



華耀科技有限公司  
 Hwa Yao Technologies co.,Ltd

|                                  |  |                        |    |
|----------------------------------|--|------------------------|----|
| TITLE<br>N Male Termination 0.5W |  |                        |    |
| DRAWING NO.<br>N-1105-3-TGN      |  |                        |    |
| APPROVED                         |  | DRAWN DATE<br>06/11/20 |    |
| CHECKED                          |  | SCALE<br>2:1           |    |
| DRAWN<br>ALICE                   |  | UNIT<br>mm             | SC |

| NOTE   | DIMENSION  |
|--|--|
| 1. STRIP ALL BURRS.  | UNLESS OTHERWISE NOTED TOLERANCES<br>X=±0.3<br>0.X=±0.2<br>0.XX=±0.1 |
| 2. ALL DIMENSIONS ARE AFTER PLATING.                             |  |
| 3. DIAMETERS ON COMMON CENTERS TO BE CONCENTRIC WITHIN 0.1 T.I.R |  |
| 4. CHAMFER 1ST & LAST THREADS 45°                                |  |
| 5. BREAK ALL CONNERS & EDGES CO.15 MAX.                          |  |

\*All creative content and details belonging to HYT's confidential, and the owner, without consent, Do not posted, theft, copied and sent to a third party.\*