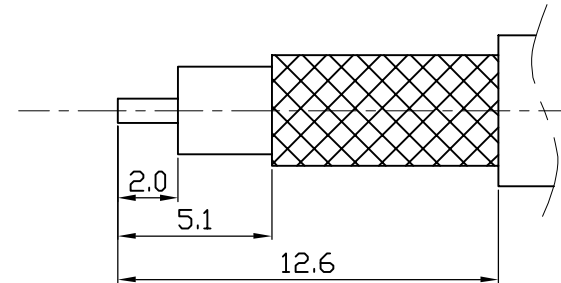
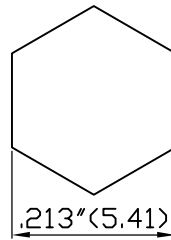
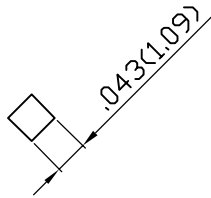
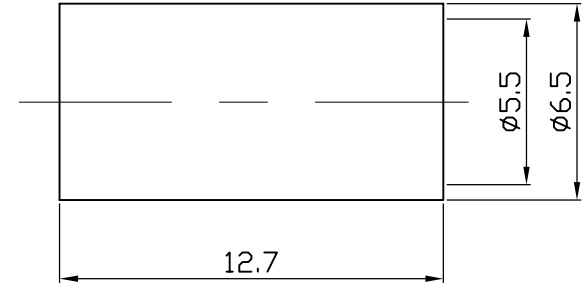
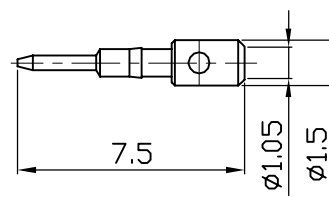
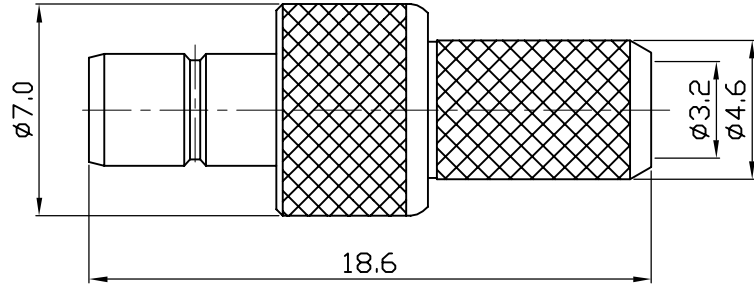


ROHS COMPLIANCE

DATE	DESCRIPTION	REV
16.07.27	NEW RELEASE	NA



Recommended Crimped Dimensions for Center Pin

Recommended Crimped Dimensions for Ferrule

Recommended Cable Stripping Dimensions



DO NOT SCALE DRAWING

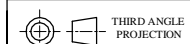
NO	Description	Q'ty	Material	Finish
5	FERRULE	1	BRASS	NICKEL
4	PIN	1	BRASS	GOLD
3	INSULATOR	1	PTFE	WHITE
2	BODY	1	BRASS	NICKEL
1	BODY	1	BRASS	NICKEL

Proprietary Note
 This document contains information proprietary to WEIJE, which is either copyrighted, or patent applied for, and/or protected by trade secret laws. This document or parts thereof, may not be used, disclosed or reproduced in any method, or for any purpose, without the written permission of WEIJE, Taiwan.

MAJOR DIMENSIONS
 UNLESS OTHERWISE NOTED TOLERANCES
 0.5-6=±0.2
 6-30=±0.4
 30-120=±0.6
 ANGLES=±2°

APPROVED BY
Ken
 CHECKED BY
 Ken
 DRAWING BY
 Wong Lih Syong
 DATE
 2019/03/18

OLD DRAWING NO
 CH-8522-A
 DRAWING NO
 417-506
 TITLE
 SMB JACK CRIMP FOR RG58/U



REV.
NA