

Thank you for purchasing our product.
Please read this user's manual before
using the product. Change without notice

H.264 HD DVR User's Manual

CAUTION

- Please read this user manual carefully to ensure that you can use the device correctly and safely
- We do not warrant all the content is correct. The contents of this manual are subject to change without notice
- This device should be operated only from the type of power source indicated on the marking label. The voltage of the power must be verified before using. If not in use for a long time, pull out the plug from the socket
- Do not install this device near any heat sources such as radiators, heat registers, stoves or other device that produce heat
- Do not install this device near water. Clean only with a dry cloth
- Do not block any ventilation openings. And ensure well ventilation around the machine
- Do not power off the DVR at normal recording condition! The correct operation to shut off DVR is to stop recording firstly, and then select “shut-down” button at the right of the menu bar to exit, and finally to cut off the power.
- This machine is indoor using equipment. Do not expose the machine in rain or moist environment. In case any solid or liquid get into the machine’s case, please cut off the power supply immediately, and ask for qualified technicians to check the machine before restart
- Refer all servicing to qualified service personnel. No any parts repaired by yourself without technical aid or approval.
- This manual is suitable for 4, 8, 16 channel HD digital video recorders.

1.1 Main Features

COMPRESSION FORMAT

Standard H.264 compression with low bit rate and better image quality

LIVE SURVEILLANCE

Support VGA /CVBS/HDMI output

Support 4/ 8/ 16 channel SDI video input

Support channel security by hiding live display

Display the local record state and basic information

Support USB to make full control

RECORD MEDIA

4 channel HD DVR support 2 SATA HDD or 1 SATA HDD if a DVD-RW writer is installed inside

8 and 16 channel HD DVR support 8 SATA HDD or 4 SATA HDD if a DVD-RW writer is installed inside

BACKUP

Support USB 2.0 devices to backup

Support saving recorded files with AVI standard format to a remote computer through internet

RECORD & PLAYBACK

Record modes: Manual, Schedule, Motion detection and Sensor alarm recording

Supports recycle after HDD full

Resolution, frame rate and picture quality are adjustable

128MB for every video file packaging

4/8/16 audio channels available

Three record search mode: time search, event search and image search

Support 1/4 (1080P) screen playback simultaneously

Support deleting and locking the recorded files one by one

Support remote playback in Network Client through LAN or internet

ALARM

Alarm Input / Output: 4 CH (4/4), 8 CH (8/4), 16 CH (16/4)

Support schedule for motion detection and sensor alarm

Support pre-recording and post recording

Support linked channels recording once motion or alarm triggered on certain channel

Support linked PTZ preset, auto cruise and track of the corresponding channel

PTZ CONTROL

Support various PTZ protocols

Support 128 PTZ presets and 8 auto cruise tracks

Support remote PTZ control through internet

SECURITY

Customize user right: log search, system setup, two way audio, file management, disk management, remote login, live view, manual record, playback, PTZ control and remote live view

Support 1 administrator and 63 users.

Support event log recording and checking, events unlimited

NETWORK

Support TCP/IP, DHCP, PPPOE, DDNS protocol

Support IE browser to do remote view

Support setup client connection amount

Support dual stream. Network stream is adjustable independently to fit the network bandwidth and environment.

Support picture snap and color adjustment in remote live

Support remote time and event search, and channel playback with picture snap


Support remote PTZ control with preset and auto cruise

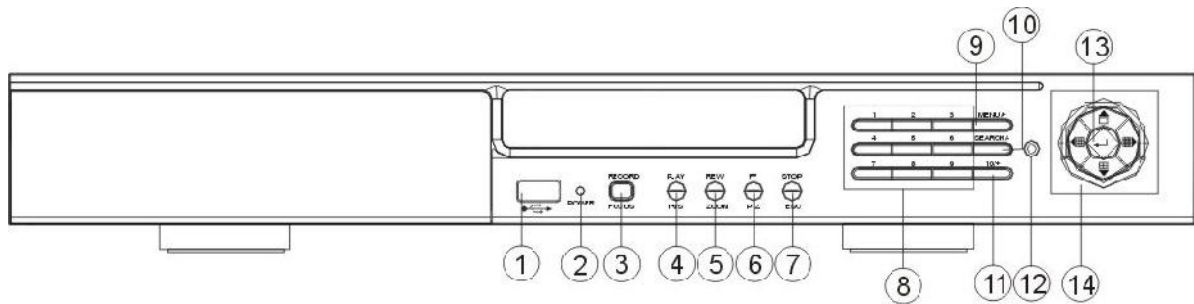
Support remote full menu setup, changing all the DVR parameters remotely

Support mobile surveillance by Smartphone, Iphone, Android Smartphone, 3G network available

Support CMS to manage multi devices on internet

1.2 Front Panel Instructions






 **Notice:** The pictures are only for reference; please make the object as the standard.



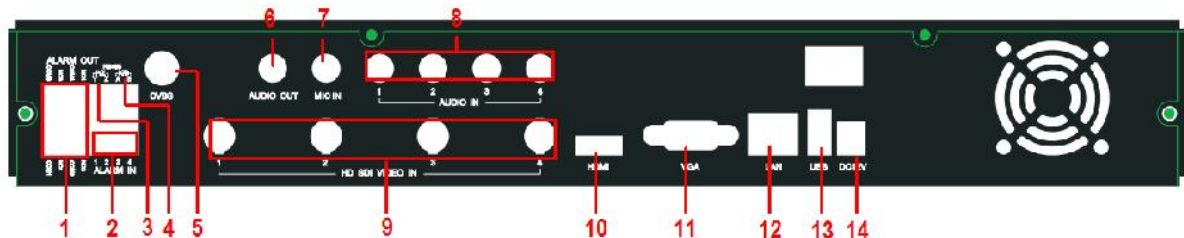
Front Panel of 4 CH HD DVR

No	Label Name	Description
1	USB	Connect USB thumb drive or mouse
2	POWER	Power indicator
3	REC / FOCUS	Manual record / FOCUS adjustment(PTZ)
4	Play / IRIS	Enter Playback/ IRIS adjustment (PTZ)
5	REW / ZOOM	REW on playback mode / ZOOM adjustment (PTZ)
6	FF / P.T.Z.	FF on playback mode /Enter PTZ mode
7	STOP / ESC	STOP playback on playback mode / Exit MENU or jump back to previous page
8	Digital	Enter digital or select channel
9	MENU / +	Enter MENU page / increase value
10	SEARCH / -	Enter SEARCH page / decrease value
11	10+	To enter digital over 10 / Continuously press twice to have 10
12	IR receiver	Remote receiver
13	Enter	Enter
14	Split / Direction Key	Switch split / Move selected item

1. The Front Panel interface for 8/16 channel HD DVR is shown as below:

Type	Name	Description
Work state indicator	REC	When recording, the light is blue
	HDD	When HDD is writing and reading, the light is blue
	Backup	When backup files and data, the light is blue
	Net	When access to network, the light is blue
	Play	When playing video, the light is blue
	Power	Power indicator, when connection, the light is blue
Compound button	P.T.Z./-	1. Enter PTZ mode in live 2. Decrease the value in setup
	AUDIO/+	1. Control voice 2. Increase the value in setup
Function button	MENU	Enter menu in live
	INFO	Check recording data
		Record manually
		Play/Pause
		Rewind
		Fast forward
		Exit/ESC
	BACKUP	Enter backup mode in live
Digital button	1-9	Input number 1-9 or choose camera
	0/10+	Input number 0, 10 and the above number together with other digital keys
Input button	Direction button	Change direction to select items
	Multi-screen	Change screen display mode like 1/4/9/16 channel
	Enter button	Confirm selection
USB	USB port	To connect external USB devices like USB flash, USB HDD for backup or update firmware;

1.3 Rear Panel Instructions



Rear Panel for 4-ch HD DVR

Item	Name	Description
1	Alarm out	4-ch relay output. Connect to external alarm.
2	Alarm in	Alarm inputs. Connect to external sensors
3	P/Z	Connect to speed dome
4	K/B	Connect to keyboard
5	CVBS port	CVBS video signal output
6	Audio out	Audio output, connect to the sound box
7	MIC IN	Talk. Connect to microphone.
8	Audio in	4-ch Audio inputs
9	HD SDI Video In	4-ch video inputs
10	HDMI port	Connect to high-definition display device
11	VGA port	VGA output, connect to monitor
12	LAN	Network port
13	USB port	To connect external USB devices like USB flash, USB HDD for backup or update firmware; or connect to USB mouse
14	DC 12V	Power input

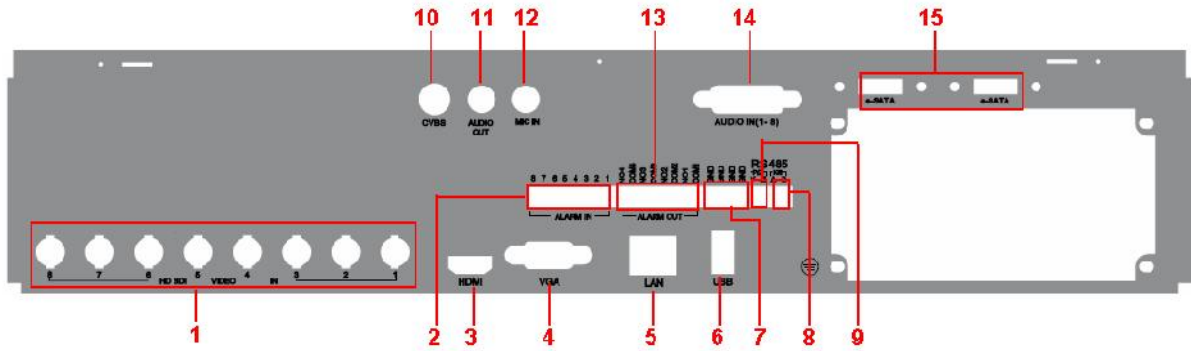


Fig 2-3 Rear Panel for 8-CH

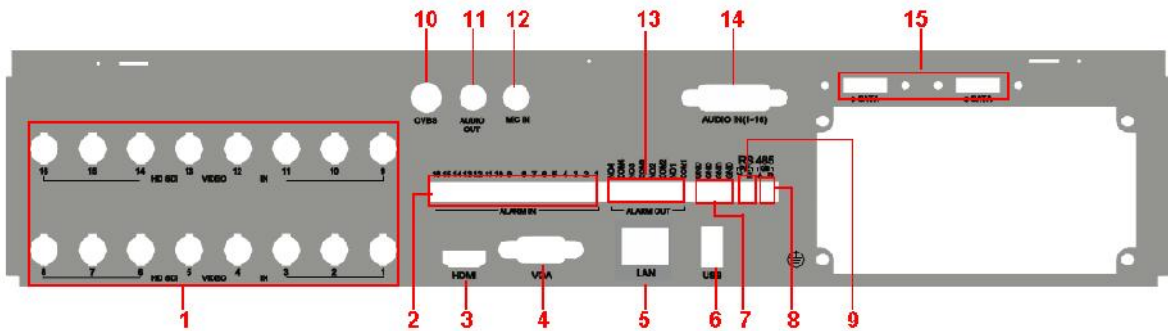


Fig 2-4 Rear Panel for 16-CH

Item	Name	Description
1	HD SD Video in	HD SDI video signal inputs.
2	Alarm in	Alarm Inputs for connecting sensors
3	HDMI port	Connect to high-definition display device
4	VGA port	VGA output, connect to monitor
5	LAN	Network port
6	USB port	To connect external USB devices like USB flash drive, USB HDD for backup or updating firmware.
7	GND	Grounding
8	K/B	Connect to keyboard. A is TX+, B is TX-.
9	P/Z	Connect to speed dome. Y is TX+, Z is TX-.
10	CVBS	CVBS output
11	Audio out	Audio output, connect to the sound box
12	MIC in	Talk. Connect to microphone
13	Alarm out	Relay Output. Connect to external alarm.
14	Audio in	Audio input
15	E-SATA	Connect to HDD for backup.

1.4 Remote Controller (Optional)

It uses two AAA size batteries.

- Open the battery cover of the Remote Controller.
- Place batteries. Please take care of the polarity (+ and -).
- Replace the battery cover.

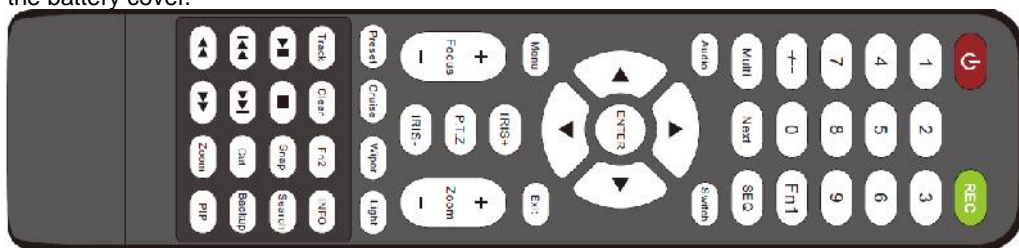





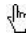
Fig 2-6 Remote Controller

Button	Function
 Power Button	Switch off—to stop DVR. Use it before turning off the power
Record Button	To record manually
-/-- /0-9 Digital Button	Input number or choose camera
Fn1 Button	Unavailable temporarily
Multi Button	To choose multi screen display mode
Next Button	To switch the live image
SEQ	To enter into auto dwell mode
Audio	To enable audio output in live mode
Switch	To switch the output between BNC and VGA
 Direction button	To move cursor in setup or pan/title PTZ
Enter Button	To confirm the choice or setup
Menu Button	To enter into menu
Exit Button	To exit the current interface
Focus/IRIS/Zoom/PTZ	To control PTZ camera. Move camera/zoom/IRIS/Focus
Preset Button	To enter into preset setting in PTZ mode
Cruise Button	To enter into cruise setting in PTZ mode
Track Button	To enter into track setting in PTZ mode
Wiper Button	To enable wiper function in PTZ mode
Light Button	To enable light function in PTZ mode
Clear Button	To return to the previous interface
Fn2 Button	Unavailable temporarily
Info Button	Get information about DVR like firmware version, HDD information
	To control playback. Play/Pause/Stop/Previous Section/Next Section/Rewind/Fast Forward
Snap Button	To take snapshots manually
Search Button	To enter into search mode
Cut Button	To set the start/end time for backup in playback mode
Backup Button	To enter into backup mode
Zoom Button	To zoom in the images
PIP Button	To enter into picture in picture setting mode

1.5 Control with Mouse

1.5.1 Connect Mouse

It supports USB mouse through the port on the rear panel, please refer to Fig 2.11 Remote Controller.

 **Notice:** If mouse is not detected or doesn't work, check below steps:

1. Make sure the mouse is connected to the USB mouse port not the USB port
2. try another mouse

1.5.2 System operation by mouse

The structure of the main menu is shown in Fig 2.11 Remote Controller.

In live:

Double-click left button on one camera to be full screen display. Double-click again to return to the previous screen display.

Click right button to show the control bar at the bottom of the screen as Fig 2.11 Remote Controller. Here are all control and setup. Click right mouse again to hide the control bar.

In setup:

Click left button to enter. Click right button to cancel setup, or return to the previous.

If want to input the value, move cursor to the blank and click. An input window will appear as Fig2.12. It supports digitals, letters and symbols input.

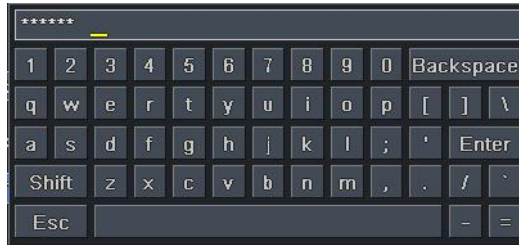


Fig 2.12 Digital Numbers and Letters Input Window

Users can change some value by the wheel, such as time. Move cursor onto the value, and roll the wheel when the value blinks.

It supports mouse drag. I.e. Set motion detection area: click customized, hold left button and drag to set motion detection area. Set schedule: hold left button and drag to set schedule time

In playback:


Click left button to choose the options. Click right button to return to live mode.

In backup:

Click left button to choose the options. Click right button to return to previous picture.

In PTZ control:

Click left button to choose the buttons to control the PTZ. Click right button to return to live.

 **Notice:** *Mouse is the default tool in all the operation below unless Exceptional indication.*

2 Basic Function Instruction

2.1 Power On/Off

Before you power on the unit, please make sure all the connection is good.

2.1.1 Power on

Step1: connect with the source power; switch on the power button near the power port in the rear panel

Step2: the device will start to boot, and the power indicator will become blue

Step3: before start, a WIZARD dialogue box will pop-out (refer to below picture) and show some information about time zone and time setup, IP information, record quick setup and HDD information page.



After the device powers on, if there is no menu or only has live image display, user can long press ESC button to switch.

Notice: this serial device can only display menu on VGA monitor or BNC monitor at one time, if there is live image display without menu display, please check up whether other device has menu display firstly, or long press ESC key to wait for login dialog box to appear.

2.1.2 Power off


User can power off the device by using remote controller, keyboard and mouse.

By remote controller:

Step1: press Power button, the shut down window will appear, click OK, the unit will power off after a while.

Step2: disconnect the power

By keyboard and mouse:

Step1: enter into  Menu, then select "System Shut Down" icon, the Shut down window will appear

Step2: click OK, the unit will power off after a while.

Step3: disconnect the power

2.2 Login

User can login and logout the DVR system. User cannot do any other operations except changing the multi-screen display once logout.



Fig 3-1 Login

Notice: the default user name and password is "admin" and 123456"

The concrete operation steps for change password, add or delete user please refer to Fig 3.7 User management configuration for more details.

2.3 Live preview



Fig 3-2 live preview interface

The explanation of symbol in the live preview interface:

symbol	meaning	symbol	meaning
Green	Manual record	Red	Alarm in trigger record
Yellow	Motion detection record	Blue	Schedule record

2.3.1 Live playback

Click Play button to playback the recorded video. Refer to Figure3-3. User can do concrete operation by click the buttons on screen.



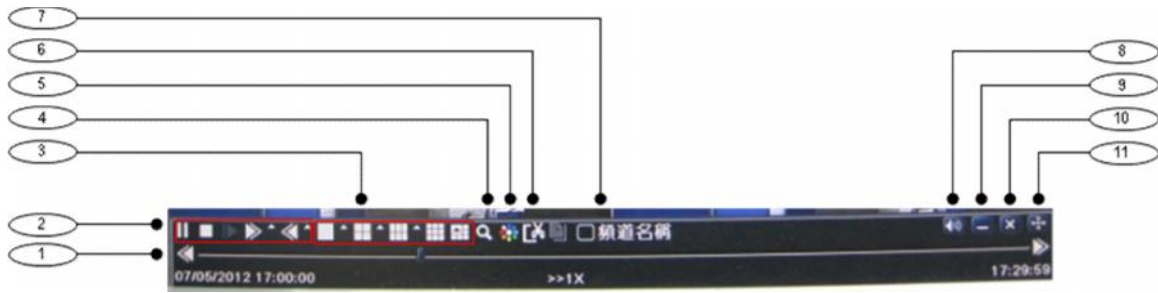


Fig 3-3 live playback

Item	Function	Description
1	Playback process bar	Last/next segment of record and time process
2	Playback basic function	Play/ Pause / Stop / frame forward / fast forward / fast rewind
3	Display mode	4ch:1/ 4, 8ch:1/ 4/ 6/ 9/ 1+5/ 1+7, 16ch:1/ 4/ 6/ 9/ 16/ 1+5/ 1+7/ 1+12
4	Zoom	Screen digital zoom x2
5	Color	Setup picture color
6	Cut	Enable to select a specific part of the video and back it up on usb drive
7	Camera name	Enable or disable camera name display
8	Volume	Volume mute on/off
9	Reduce	Hide playback tool bar
10		Exit playback mode
11		Move the playback bar in the screen

3 Main menu setup guide


Click right mouse or press ESC button on the front panel, the control bar will display on the screen, refer to Fig 4-1:

Full channel switch, camera 1 ~ 4 or camera 1 ~ 8, camera 1 ~ 16



1	Single	Full channel
2	Multi	4ch:1/4, 8ch:1/4/9, 16ch:1/4/9/16
3	E-Zoom	Live/playback digital zoomx2
4	Audio	Audio channel setup and volume
5	PTZ	Into PTZ control mode
6	Record	Manual record
7	Playback	Playback the nearest file
8	Main Menu	Into main OSD
9	Dwell	Channel sequence(only 16CH)

Fig 4-1 main menu toolbar

Click Menu  button, the interface will pop-up as Fig 4-2; press MENU button on the front panel or operate with remote controller also can display the main menu.

Main OSD



Fig 4-2 system setup



3.1 Basic configuration

Basic configuration includes three sub menus: system, date& time and DST.

3.1.1 System

Step1: enter into system configuration→basic configuration→system; refer to Fig 4-3:



Fig 4-3 basic configuration-basic

Step2: in this interface user can setup the device name, device ID, video format, max network users, VGA resolution and language. The definitions for every parameters display as below:

Device name: the name of the device. It may display on the client end or CMS that help user to recognize the device remotely.

Video format: two modes: PAL and NTSC. User can select the video format according to that of camera.

Password check: enable this option, user needs to input user name and password can do corresponding operations with the relevant right in system configuration.

Show time: display time in live.

Show wizard: tick off this item, there will display an opening wizard with time zone and time setup information

Max network uses: set the max user amount of network connection

VGA resolution: the resolution of live display interface, range from: VGA800*600、VGA1024*768、VGA1280*1024,CVBS and HDMI

Note : When switch between VGA, CVBS and HDMI will change the menu output mode, please connect to relevant monitor.

Language: setup the menu language.

Note: after changed the language and video output, the device needs to login again.

3.1.2 Time & date

Step1: enter into system configuration→basic configuration→time & date; refer to Fig 4-4:

8 CH



Fig 4-4 basic configuration-time & date

Step2: set the date format, time format, time zone in this interface; click off “sync time with NTP server” to refresh NTP server date; user also can adjust system date manually

Step3: click “default” button to resort default setting; click “apply” button to save the setting; click “exit” button to exit current interface.

3.1.3 DST

Step1: enter into system configuration→basic configuration→DST; refer to Fig 4-5:



Fig 4-5 basic configuration-DST

Step2: in this interface, enable daylight saving time, time offset, mode, start & end month/week/date, etc.

Step3: click “default” button to resort default setting; click “apply” button to save the setting; click “exit” button to exit current interface.

3.2 Live configuration

Live configuration includes four submenus: live, host monitor, SPOT and mask.

3.2.1 Live

In this interface, user can setup camera name, adjust colors: brightness, hue, saturation and contrast.

Step1: enter into system configuration→live configuration→live; refer to Fig 4-6:



Fig 4-6 live configuration→live

Step2: tick off camera name; click “setting” button, a window will pop-up as Fig 4-7:

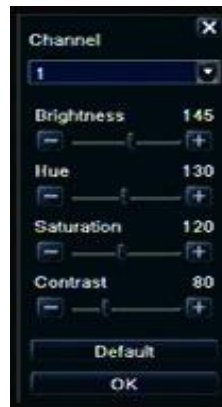


Fig 4-7 live-color adjustment

Step3: in this interface, user can adjust brightness, hue, saturation and contrast in live; click “default” button to resort default setting, click “OK” button to save the setting.

Step4: user can setup all channels with same parameters, tick off “all”, then do relevant setup.

Step5: click “default” button to resort default setting; click “apply” button to save the setting; click “exit” button to exit current interface.

3.2.2 Main monitor

Step1: enter into system configuration→live configuration→host monitor; refer to Fig 4-8:



Fig 4-8 live configuration-host monitor

Step2: select split mode: 1x1、2x2、2x3、3x3、4x4 and channel

Step3: dwell time: the time interval for a certain dwell picture display switching to next dwell picture display

Step4: selected the split mode, then setup current picture group. Click ◀ button to setup the previous channel groups of dwell picture, click ▶ button to set the latter channel groups of dwell picture.

Step5: click “default” button to resort default setting; click “apply” button to save the setting; click “exit” button to exit current interface.

3.2.3 SPOT

Step1: enter into system configuration→live configuration→SPOT; refer to Fig 4-9:



Fig 4-9 live configuration-SPOT

Step2: select split mode: 1x1and channel

Step3: dwell time: the time interval for a certain dwell picture display switching to next dwell picture display

Step4: selected the split mode, then setup current picture group. Click ◀ button to setup the previous channel groups of dwell picture, click ▶ button to set the latter channel groups of dwell picture.

Step5: click “default” button to resort default setting; click “apply” button to save the setting; click “exit” button to exit current interface

3.2.4 Mask

User can setup private mask area on the live image picture, max threes areas.



Fig 4-10 live configuration-mask

Setup mask area: click Setting button, enter into live image to press left mouse and drag mouse to set mask area, refer to below picture. Click Apply button to save the setting.

Delete mask area: select a certain mask area, click left mouse to delete that mask area, click Apply button to save the setting.



Setup mask area

Notice: The mask area will not be recorded on DVR. Please use this function carefully.



Live image mask area

3.3 Record configuration

Record configuration includes five sub menus: enable, record bit rate, time, recycle record and stamp.

3.3.1 Enable

Step1: enter into system configuration→record configuration→enable; refer to Fig 4-11:

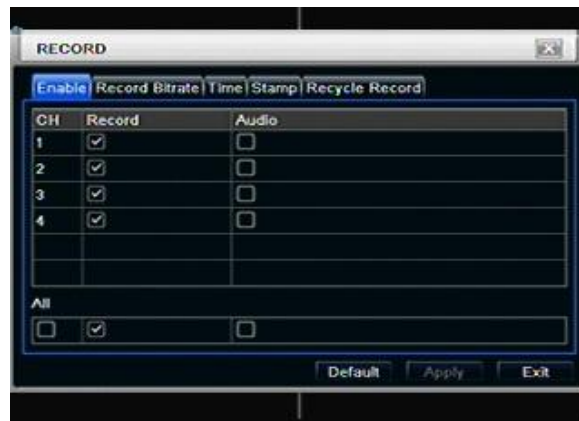


Fig 4-11 record configuration-enable

Step2: tick off record, audio and record time

Step3: user can setup all channels with same parameters, tick off "all", then to do relevant setup.

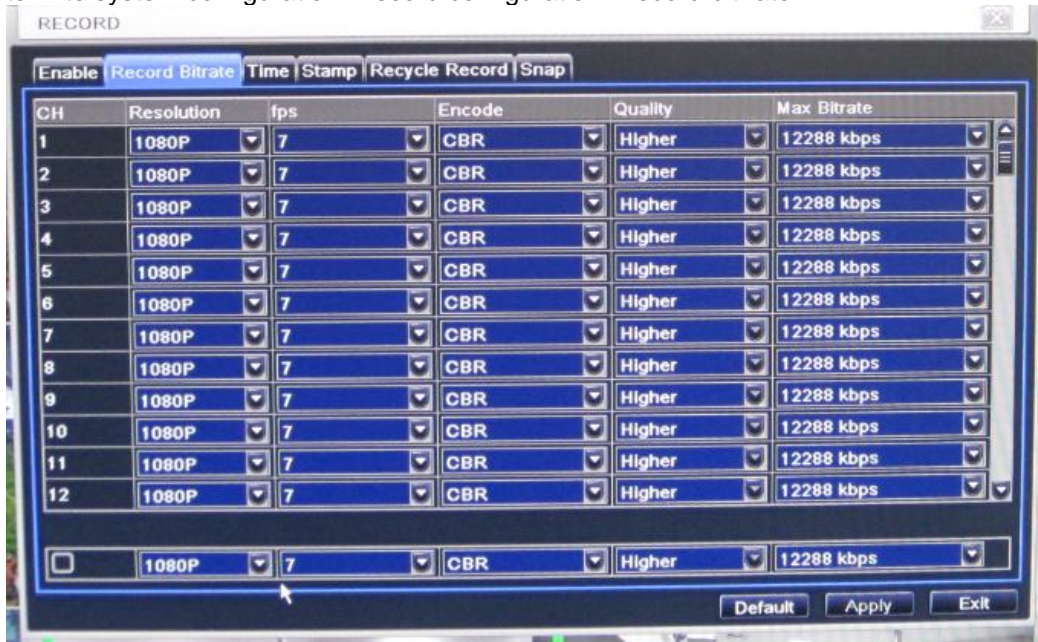
Step4: click "default" button to resort default setting; click "apply" button to save the setting; click "exit" button to exit current interface.

Definitions and descriptions of Record:

Parameter	Meaning
Record	Record switch of every channels
Audio	Enable live record audio

3.3.2 Record stream

Step1: enter into system configuration→record configuration→record bit rate



Step2: setup rate, resolution, quality, encode and max bit stream

Step3: user can setup all channels with same parameters, tick off "All", then to do relevant setup.

Step4: click "default" button to resort default setting; click "apply" button to save the setting; click "exit" button to exit current interface.

Note: if the rate value set is over high the maximum resources of the device, the value will be adjusted automatically.

Definitions and descriptions of Record stream:

Parameter	Meaning
Resolution	Support 1080P,
FPS	4 CH HD DVR 1080P@7FPS(6FPS) 8 and 16 CH HD DVR 1080P@15FPS(12FPS)
Quality	The quality of recorded images. The higher the value is, the clearer the recorded image is. Six options: lowest, lower, low, medium, higher and highest.
Encode	VBR and CBR
Max bit stream	Range from 1536kbps~12288kbps

3.3.3 Time

Step1: enter into system configuration→record configuration→time; refer to Fig 4-12:



Fig 4-12 record configuration-time

Pre-alarm record time: the record time before event happen i.e. record time before motion detection or sensor alarm is triggered.

Post-alarm record: set the post recording time after the alarm is finished, five options: 10s、 15s、 20s、 30s and 60s.

Expire time: the hold time of saved records. If the set date is overdue, the record files will be deleted automatically.

Step2: user can setup all channels with same parameters, tick off “all”, then to do relevant setup.

Step3: click “default” button to resort default setting; click “apply” button to save the setting; click “exit” button to exit current interface.

3.3.4 Stamp

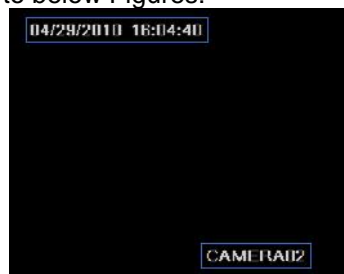
Stamp : User can overlap the channel name and time stamp on video.

Step1: enter into system configuration→ record configuration→ stamp; refer to Fig 4-13:



Fig 4-13 record configuration-stamp

Step2: tick off camera name, time stamp; click Set button, user can use cursor to drag the camera name and time stamp in random positions, refer to below Figures:



Before drag



after drag

Step3: user can setup all channels with same parameters, tick off "all", then to do relevant setup.

Step4: click "default" button to resort default setting; click "apply" button to save the setting; click "exit" button to exit current interface.

3.3.5 Recycle record

Step1: enter into system configuration→record configuration→recycle record;



Step2: tick off recycle record, the recycle record function will enable, it will cover the earlier recorded files and keep recoding when HDD is full; if disenable this function, it will stop recording when HDD is full.

Step3: click "default" button to reset default setting; click "apply" button to save the setting; click "exit" button to exit current interface.

3.4 Schedule configuration

Schedule configuration includes three sub menus: schedule, motion and alarm.

3.4.1 Schedule

The volume means the seven days of a week from Monday to Sunday, the row means 24 hours of a day. Click the grid to do relevant setup. Blue means checked area, gray means unchecked area.

Step1: enter into system configuration→schedule configuration→schedule; refer to Fig 4-14:



Fig 4-14 schedule configuration-schedule

Step2: select channel, double-click and a dialog box will pop-up as Fig 4-15, user can edit week schedule:



Fig 4-15 schedule-week schedule

Click "add" button to add a certain day schedule; click "delete" button to delete the selected schedule; Copy: user can copy the specify schedule to other dates. Click "OK" button to save the setting, click "Exit" button to exit current interface. User can apply the schedule setting of certain channel to other or all channels, just only select channel and click "Copy" button.

Step3: click "default" button to resort default setting; click "apply" button to save the setting; click "exit" button to exit current interface.

3.4.2 Motion

Step1: enter into system configuration→schedule configuration→motion; refer to Fig 4-16:



Fig 4-16 schedule configuration-motion

Step2: the setup steps of motion are familiar with schedule; user can refer to 4.4.1 Schedule for details.

Note: the default schedule of motion detection is full-selected, that is, the color of schedule setting interface is blue.

3.4.3 Sensor

Step1: enter into system configuration→schedule configuration→alarm; refer to Fig 4-17:

Step2: the setup steps of alarm are familiar with schedule; user can refer to 4.4.1 Schedule for details.

Note: the default schedule of sensor is full-selected, that is, the color of schedule setting interface is blue.



Fig 4-17 schedule configuration-sensor

3.5 Alarm configuration

Alarm configuration includes five sub menus: sensor, motion, video loss, other alarm and alarm out.

3.5.1 Sensor

Sensor includes three sub menus: basic, alarm handling and schedule.

Basic

Step1: enter into system configuration→alarm configuration→sensor→basic; refer to Fig 4-18:

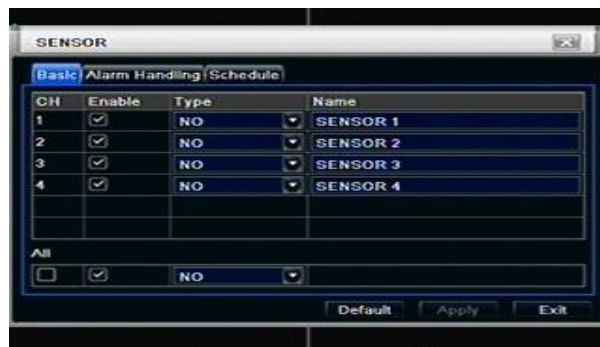


Fig 4-18 alarm configuration-sensor-basic

Step2: enable sensor alarm, set the alarm type according to triggered alarm type. Two option: NO and NC.

Step3: user can setup all channels with same parameters, tick off “all”, then to do relevant setup.

Step4: click “default” button to resort default setting; click “apply” button to save the setting; click “exit” button to exit current interface.

Alarm handling

Step1: enter into system configuration→alarm configuration→sensor→alarm handling; refer to Fig 4-19:



Fig 4-19 alarm configuration-sensor-alarm handling

Step2: select hold time, click Trigger button, and a dialog box will pop-up as Fig 4-20:

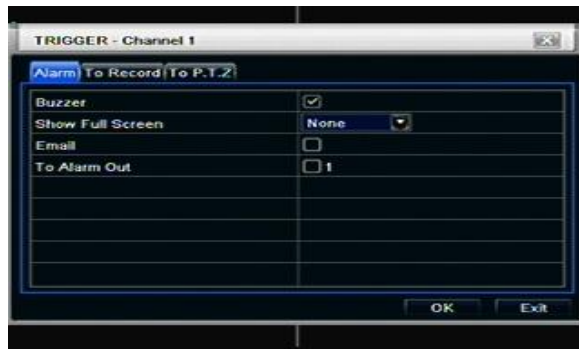


Fig 4-20 alarm handling-trigger

Step3: tick off Buzzer, there will be triggered buzzer alarm out;

Full screen alarm: when triggered alarm, there will pop up full screen alarm;

To alarm out: tick off the channel, there will be triggered alarm out in the designated channel. Click OK button to save the setting; click Exit button to exit the current interface.

To record: tick off recoding channels, it will record the camera when alarm triggered. Click OK button to save the setting; click Exit button to exit the current interface.

To P.T.Z: set linked preset and cruise for alarm. User can select any channel and multi channels as linked channels. Click OK button to save the setting; click Exit button to exit the current interface.

Step4: user can setup all channels with same parameters, tick off "all", then to do relevant setup.

Step5: click "default" button to resort default setting; click "apply" button to save the setting; click "exit" button to exit current interface.

Schedule

Step1: enter into system configuration→alarm configuration→sensor→schedule; refer to Fig 4-21:



Fig 4-21 sensor-schedule

Step2: the setup steps of sensor schedule are familiar with schedule; user can refer to 4.4.1 Schedule for details.

Note: the default schedule of sensor is full-selected, that is, the color of schedule setting interface is blue.

3.5.2 Motion

Motion includes two sub menus: motion and schedule.

Motion

Step1: enter into system configuration→alarm configuration→motion; refer to Fig 4-22:



Fig 4-22 alarm configuration-motion

Step2: enable motion alarm, set alarm hold time which means time interval between two adjacent detective motions. If there is other motion detected during the interval period which is considered continuous movement; otherwise, it will be considered that those two adjacent detective motions are two different motion events. Click Trigger button, a dialog box will pop-up:

Step3: the setup steps of motion trigger are familiar with alarm handling; user can refer to Chapter 4.5.1 Sensor →alarm handling for more details.

Step4: click Area button, a dialog box will pop-up as Fig 4-23:



Fig 4-23 motion-area

Step5: in the Area interface, user can drag slide bar to set the sensitivity value(1-8), the default value is 4. The higher the value is the higher sensitivity you get. Due to the sensitivity is influenced by color and time (day or night), user can adjust its value according to the practical conditions; click icon, set the whole area as detection area; click icon, the set detection area will be cleared; click icon, user can test whether the sensitivity value and motion area are suitable accordingly (refer to following picture) ; Click icon, to save the setting; click icon, exit current interface.



Note: when user drag mouse to set motion detection area, they have to click icon to clear all set detection area firstly, and then make the operation.

Step6: user can setup all channels with same parameters, tick off "all", then to do relevant setup.

Step7: click "default" button to resort default setting; click "apply" button to save the setting; click "exit" button to exit current interface.

Schedule

Step1: enter into system configuration→alarm configuration→schedule; refer to Fig 4-24:



Fig3-24 alarm configuration-schedule

Step2: the setup steps of alarm schedule are familiar with schedule; user can refer to 4.4.1 Schedule for details.

3.5.3 Video loss

Step1: enter into system configuration→alarm configuration→video loss; refer to Fig 4-25:



Fig 4-25 alarm configuration-video loss

Step2: the setup steps of video loss trigger are familiar with alarm handling; user can refer to Chapter 4.5.1 Sensor →alarm handling for more details.

Step3: user can setup all channels with same parameters, tick off “all”, then to do relevant setup.

Step4: click “default” button to resort default setting; click “apply” button to save the setting; click “exit” button to exit current interface.

3.5.4 Other alarm

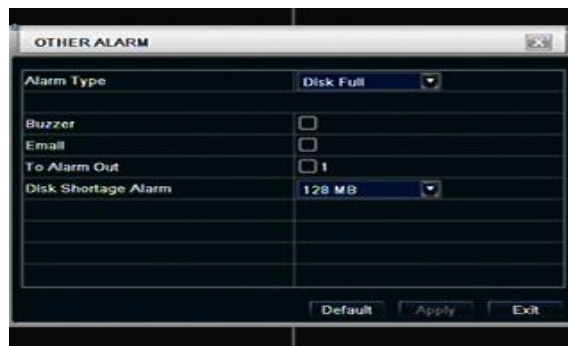


Fig4-26 other alarm

Step1: enter into system configuration→other alarm; refer to Fig 4-26:

Step2: select a hard disk in the pull down list box, when the disk capacity is lower than that value, there will appear some text information on the lower right of the live image.

Step3: click “default” button to resort default setting; click “apply” button to save the setting; click “exit” button to exit current interface.

3.5.5 Alarm out

Alarm out includes three sub menus: alarm out, schedule and buzzer

Alarm out

Step1: enter into system configuration→alarm out; refer to Fig 4-27:



Fig 4-27 system configuration-alarm out

Step2: in this interface, set relay alarm out name, select hold time which means the interval time between the two adjacent alarms.

Step3: user can setup all channels with same parameters, tick off “all”, then to do relevant setup.

Step4: click “default” button to resort default setting; click “apply” button to save the setting; click “exit” button to exit current interface.

Schedule

Step1: enter into system configuration→schedule;

Step2: the setup steps of alarm out schedule are familiar with schedule; user can refer to 4.4.1 Schedule for details.

Note: the default schedule of motion detection is full-selected, that is, the color of schedule setting interface is blue.

Buzzer

Step1: enter into system configuration→buzzer; (if here sets is off, all event without buzzer)

Step2: tick off Buzzer, set buzzer alarm hold time

3.6 Network configuration

Network configuration includes two submenus: network and network stream.

3.6.1 Network

Step1: enter into system configuration→network configuration→network; refer to Fig4-28:



Fig 4-28 network configuration-network

Step2: HTTP port: the default value is 80. If the value changed, user needs to add the port number when typing IP address in IE address blank .i.e. set HTTP port to 82, IP address: <http://192.168.0.25>, user needs to input that address: <http://192.168.0.25:82> into IE browser.

Server port: communication port

There are 3 different types to connect internet, please select an appropriate type to fit your network environment.

1. STATIC (FIXED) IP: Input IP address, subnet mask, gateway and DNS server manually.
2. DHCP : Check the "Obtain IP address automatically", the device will acquire IP address, subnet mask, gateway and DNS service.
3. PPPOE : input the user name and password from ISP provider.

No matter which type you use, please click "Test" before you click "Apply" to make the setting work.

Definitions and descriptions of network configuration:

Parameter	Meaning
HTTP port	The port number of accessing IE browser. The default port is 80
Server port	The port number of data. The default port is 6036
Static IP	
IP address	The IP address of the server
Subnet mask	The subnet mask of the server
Gateway	The gateway of the server
DNS server	The address of DNS server
PPPOE	
User name	User name of broad band dial-up
Password	Password of broad band dial-up
DDNS server	
DDNS server	Website provided by dynamic domain name supplier. The optional: www.meibu.com , www.dyndns.com
User name	User name for log in the website of domain name supplier
Password	Password for log in the website of domain name supplier

3.6.2 Network stream

Step1: enter into system configuration→network configuration→sub stream; refer to Fig 4-32:



Fig 4-32 network configuration-sub stream

- Step2: select fps, resolution, quality, encode and max bit rate
- Step3: user can setup all channels with same parameters, tick off "all", then to do relevant setup.
- Step4: click "default" button to resort default setting; click "apply" button to save the setting; click "exit" button to exit current interface.

Definitions and descriptions of network stream:

Parameter	Meaning
FPS	For 4 CH HD DVR CIF@7FPS, for 8 and 16 CH HD DVR CIF@30FPS
Resolution	Support CIF
Quality	The quality of the clients image. The higher the value is, the clearer the record image. Six options: lowest, lower, low, medium, higher and highest.
Encode	VBR and CBR
Max bit rate	Range from: 64 Kbps、128 Kbps、256 Kbps、512 Kbps、768 Kbps、1Mbps、2 Mbps

3.6.3 Email

Step1: enter into system configuration→network configuration→email; refer to Fig 4-31:



Fig 4-31 network configuration-email

SMTP Server/Port: the name and port number of SMTP server.

If your SMTP server supports the secure connection (SSL), like Gmail, please set the “Port” to 465 and check “SSL Check”

Send address/password: sender’s email address/password

Receive address: receiver’s email address. Here user can add at least three mail addresses.

Click TEST button to test the valid of the mailbox.

Attaching image amount: user can attach at most three images at one time.

Snap Time Interval(s): User can select snap time interval.

“Strongly recommend to use Google mail (gmail)”

For Example:

SMTP Server: smtp.gmail.com

Port: 465

SSL Check: V

Send Address: alan@gmail.com

Receive Address1: test@yahoo.com

3.6.4 Other settings

Step1: enable DDNS server: user needs to input user name , password and host domain name of the registered website, click TEST to test the effectively of relevant information.



Fig 4-32 network configuration-other settings

STEP2: click “default” button to resort default setting; click “apply” button to save the setting; click “exit” button to exit current interface.

Note: The domain name server that selected by user is a banding domain name of DVR. User should logon the website which provided by the server supplier to register a user name and password firstly, and then apply a domain name on line for the server. After the successful apply, user can access the server from the IE client by inputting that domain name.

*Please reference Appendix C to setup DDNS function.

3.7 User management configuration

Step1: enter into system configuration→user management configuration; refer to Fig 4-33:



Fig 4-33 user management configuration

Step2: click Add button, a dialog box will pop-up as Fig 4-34:



Fig 4-34 add-general

- ① General: Input user name, password; select user type: normal and advance, input the MAC address of the PC; click OK button, this user will be added into the user list box; click Exit button to exit the current interface.

Note: when the default value of binding PC MAC address is 0, the user is not bind with the specify computer; the, the user can log in DVR on the binding computer after set the specific binding MAC address.

- ② Authority:
- a) Admin: Admin have full control of DVR. DVR could have only one admin account.
 - b) Advance: Besides "firmware upgrade", "reset factory default", "shut down" and "change other user's password", advance account could control DVR like an admin account.
 - c) Normal: Normal account can only do "live view", "playback", "search", "backup", "log off", "view DVR information", and "change his own password".

3.8 P.T.Z configuration

P.T.Z configuration includes two submenus: serial port and advance

Serial port

Step1: enter into system configuration→P.T.Z configuration→serial port; refer to Fig 4-36:



Fig 4-36 P.T.Z configuration-serial port

Step2: tick off Enable, setup the value of address, baud rate and protocol according to the settings of the speed dome.

Step3: user can setup all channels with same parameters, tick off "all", then to do relevant setup.

Step4: click "default" button to resort default setting; click "apply" button to save the setting; click "exit" button to exit current interface.

Definitions and descriptions of network stream:

Parameter	Meaning
Address	The address of the PTZ device
Baud rate	Baud rate of the PTZ device. Range form: 110、 300、 600、 1200、 2400、 4800、 9600、 19200、 34800、 57600、 115200、 230400、 460800、 21600.
Protocol	Communication protocol of the PTZ device. Range from: NULL、 PELCOP、 PELCOD 、 LILIN、 MINKING、 NEON、 STAR、 VIDO、 DSCP、 VISCA、 SAMSUNG、 RM110、 HY

Advance

Step1: enter into system configuration→ P.T.Z configuration→advance; refer to Fig 4-37:



Fig 4-37 P.T.Z configuration-advance

Step2: in the Advance interface, click preset “Setting” button, a dialog box will pop-up as Fig 4-38:



Fig 4-38 advance-preset setting

a. in the preset set interface, click Setting button, a dialog will pop-up as Fig 3-39:



Fig 3-39 preset set-setting

b. user can control the dome rotates up, up left, down, right down, left, left down, right and up right and stop rotating; adjust the rotate speed and the value of zoom, focus and iris of the dome;

c. select the serial number of the preset point, set the preset name. Click Save button to save the settings, click icon to hide the tool bar, right-key can remerge it; click icon to exit the current interface.

d. in the preset interface, click OK button to save the setting; click Exit button to exit current interface.

Step3: in the Advance interface, click cruise “Setting” button, a dialog box will pop-up as Fig 4-40:

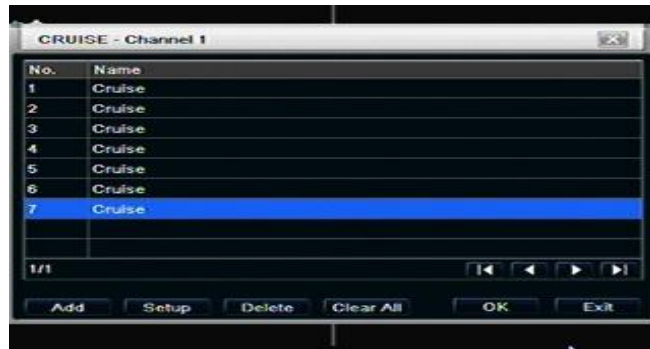






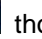


Fig 4-40 cruise set

a. click Add button to add cruise line in the list box (max 8 cruise line can be added); select a cruise line, click Setup button, a dialog box will pop-up as Fig 4-41:



Fig 4-41 cruise set-modify cruise line



b. click Add icon  to set the speed and time of preset point; select a preset point, click Delete icon  to delete that preset point; click Modify icon  to modify the setting of a preset point. User can click     those icons to adjust the position of preset point. Click Preview button to preview the cruise line, click OK button to save the setting, click Exit button to exit current interface.
c. select a preset point in the cruise line list box, click Delete button to delete that cruise line; click Clear all button to clear all cruise line from the list box; click OK button to save the setting; click Exit button to exit current interface.

Step4: in the Advance interface, click track "Set" button, a dialog box will pop-up as Fig 4-42:



Fig 4-42 track set

a. user can control the dome rotates up, up left, down, right down, left, left down, right and up right and stop rotating; adjust the rotate speed and the value of zoom, focus and iris of the dome; click Start Record button to record the move track of PTZ, click this button again can stop record; click Start track button to play recorded track, click this button again can stop play.;

b. click  icon to hide the tool bar, right-key can remerge it; click  icon to exit the current interface.

Step5: in the Advance interface, click "default" button to resort default setting; click "apply" button to save the setting; click "exit" button to exit current interface.

4 Record search & playback and backup

Search configuration includes three submenus: time search, event search and file manager.

4.1 Time search

Step1: enter into Search configuration→time search; refer to Fig 5-1:



Fig 5-1 Search configuration-time search

Step2: select channel, screen display mode, the highlight date in the calendar means have record data
 Step3: select a date, press Search button, click the time grid to set the play start time or input play record time manually. The selected time match the blue grid.

Note: the vertical column means hours, horizontal column means channels.

Step4: click Play button to playback record; click the relevant buttons on the screen to do operation:



Playback buttons

Note: when the monitor resolution is VGA800*600, the time search interface will appear a hide button, click this button, the whole interface can be expanded.

4.2 Event search

Step1: enter into Search configuration→event search; refer to Fig 5-2:



Fig 5-2 Search configuration-event search

Step2: click Search button, the searched event information will displayed in the event list box, user can select date, channel, tick off Motion, Sensor or All accordingly.

Step3: double check a certain record file to playback.

Note: when the monitor resolution is VGA800*600, the event search interface will appear a hide button, click this button, the whole interface can be expanded.

4.3 File manager

Step1: enter into Search configuration→file manager; refer to Fig 5-3:

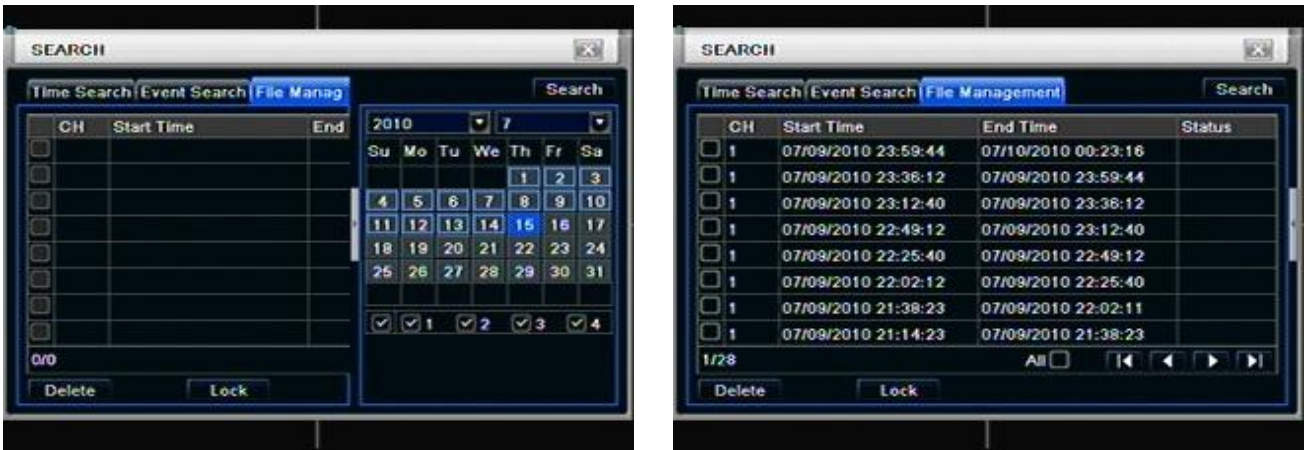


Fig 5-3 Search configuration-file manager

Step2: click Search button, the searched files will be displayed in the file list box, user can select date, channels accordingly.

Lock: checked a file, click Lock button to lock this file, after that, that file will not be deleted or covered.

Unlock: checked a locked file, click Lock button to unlock this file

Delete: checked an unlocked file, click Delete button to delete this file.

Step3: tick off "All" button; user can lock/unlock or delete all files in the file manager column.

Step4: double click an unlocked item to playback.

Note: when the monitor resolution is VGA800*600, the file manager interface will appear a hide button, click this button, the whole interface can be expanded.

4.4 Backup

This unit supports backup by external SATA DVD Writer and USB Flash, through the USB port on the front panel. User also can make backup by IE browser via internet. Refer to 7.3.2 Remote backup.

Step1: enter into backup configuration; refer to Fig 5-4:

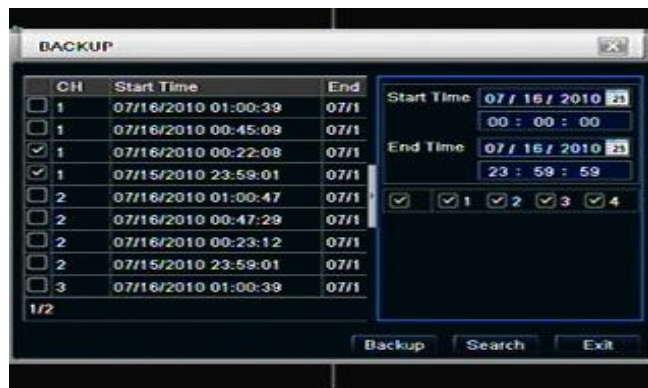


Fig 5-4 backup configuration

Step2: set the start & end time, select channels, click Search button, the searched data will be displayed in the data backup list box

Step3: checked a data file or tick off "All" to select all data files, click Backup button, a dialog box will pop-up as Fig 5-5:



Fig 5-5 backup information

Step4: in the backup information interface, user can check the relevant information of backup files, storage type, save file type, etc. click Apply button to starting backup.

Note: when the monitor resolution is VGA800*600, the file manager interface will appear a hide button, click this button, the whole interface can be expanded.

5 Manage DVR

5.1 Check system information

Check system information includes five submenus: system, event, log, network and online user.

5.1.1 System information

In this interface, user can check the hardware version, MCU version, kernel version, device ID, etc. refer to Fig 6-1:



Fig 6-1 system information

5.1.2 Event information

In this interface, user can check record events according to set date; refer to Fig 6-2:

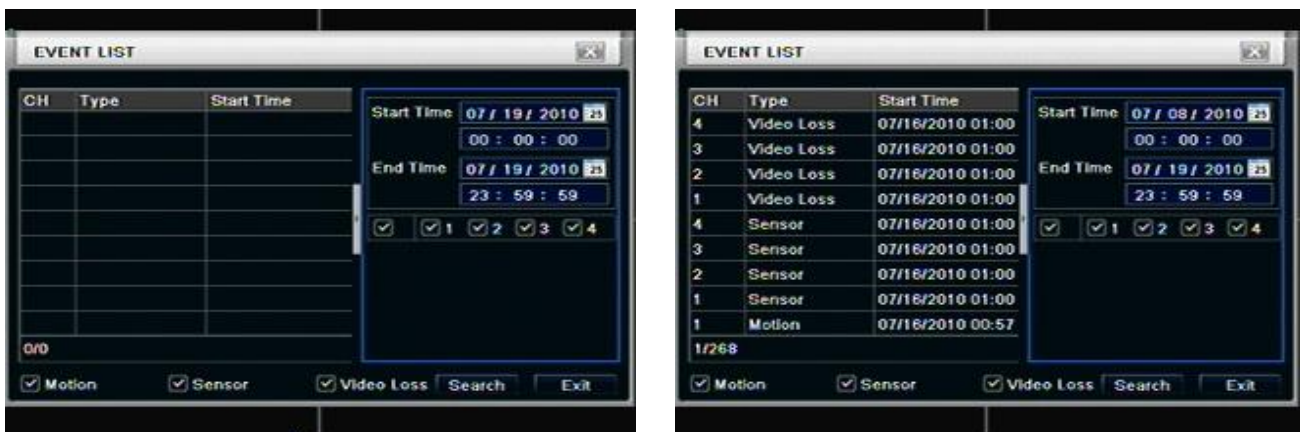


Fig 6-2 event information

5.1.3 Log information

In this interface, user can check relevant log information according to set date; refer to Fig 6-3:

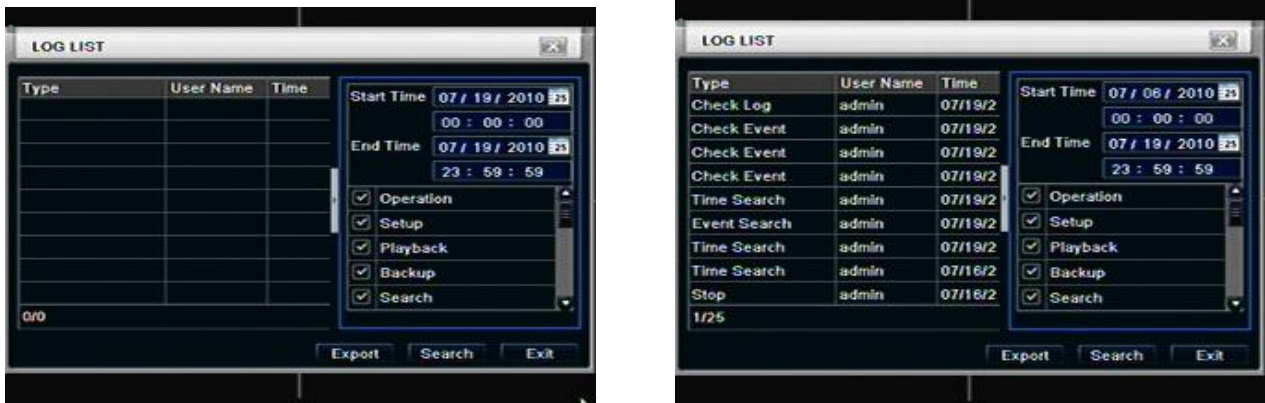


Fig 6-3 log information

5.1.4 Network information

In this interface, user can check relevant parameters of network; refer to Fig 6-4:



Fig 6-4 network information

5.1.5 Online information

In this interface, user can check the details of the current connection of online users; refer to Fig 6-5:



Fig 6-5 online information

5.1.6 Manual alarm

User can check the relevant parameters of manual alarm to active emergency warning



5.1.6 Disk manager

Step1: enter into disk manager interface; refer to Fig 5-7:



Fig 6-7 disk manager

Note: please format the hard disk before record. If not being formatted, it will show the status of the disk-free space, and total space show OM at the bottom of screen.

Step2: click Refresh button to refresh the disk information of the list box; set the property of the disk then click Apply button to save the setting


Step3: checked a hard disk, click Format button to star format.

Note: all recorded files in the hard disk will be lost after formatted.

5.1.7 Upgrade

At present, it only supports USB update. Get the firmware from your vendor when there is a new firmware version, and make sure it is corresponding with the DVR. User can check the USB information in Disk manager.

5.1.8 Logoff

Click Log off icon, a log off dialogue box will popup, click OK button, the device will log off. If user wants to log in again, click  icon to enter into user name and password to rellogin.

5.1.9 Shut Down

Note: DVR going to power off

6.1 Accessing DVR

If making remote view, the DVR must connect with LAN or internet. Then enable network server in the unit. Please refer to 4.6 Network Configuration.

This unit supports IE browser, without any client software installed. It supports Win 7, XP and Vista.

6.1.1 On LAN

Step1: Input IP address, Subnet, Gateway. If using DHCP, please enable DHCP in both the DVR and router. Enter Menu—Information—Network, and user can check the network configuration of DVR.

Step2: Enter Video to set network video parameters like resolution, frame rate etc.

Step3: Open IE browser on a computer on the same LAN. Input the IP address of the DVR in IE address blank and enter.

Step4: IE will download ActiveX automatically. Then a window pops up and asks for user name and password.

Step5: Input name and password correctly, and enter. It will show the picture as below.



Fig 7-1 View with IE browser

Notice: If HTTP port is not 80, other number instead, need add the port number after IP address. For example, set HTTP port as 82, need input IP address like `http://192.168.0.25:82`.

User name and password here are the same with that used on the DVR. The default is admin and 123456.

6.1.2 On WAN

There are two ways that the DVR is connected to internet.

1. Connect the DVR to internet through a router or virtual server.

Step1: Input IP address, Subnet, Gateway. If using DHCP, please enable DHCP in both the DVR and router.

Step2: Enter Video to set network video parameters like resolution, frame rate etc.

Step3: Forward IP address and port number in Virtual Server setup of the router or virtual server. Close firewall.

Notice: Forwarding block may be different in different routers and server, please check your router manual.

If users want to utilize dynamic domain name, need apply for a domain name in a DDNS server supported by the DVR or router. Then add to the DVR or router.

Now this unit only supports www.meibu.com, www.dyndns.com, www.no-ip.com and www.dvrddns.com

About the router, please check in the router manual.

Step5: Open IE browser, input IP address, or dynamic domain name and enter. If HTTP port is not 80, add the port number after IP address or domain name.

Step6: IE will download ActiveX automatically. Then a window pops up and asks for user name and password.

Step7: Input name and password correctly, and enter to view.

Notice: If you cannot download and install ActiveX, please refer to Appendix A FAQ Q7.

2. Connect the DVR to internet directly.

Step1: Input IP address, Subnet, Gateway gotten from your ISP. If using ADSL, please input user name and password, and click OK. The DVR will connect the server and show "connection succeeds".

Step2: The following steps are the same as STEP4-7 of the connection way above.

6.2 The remote live preview interface as below:

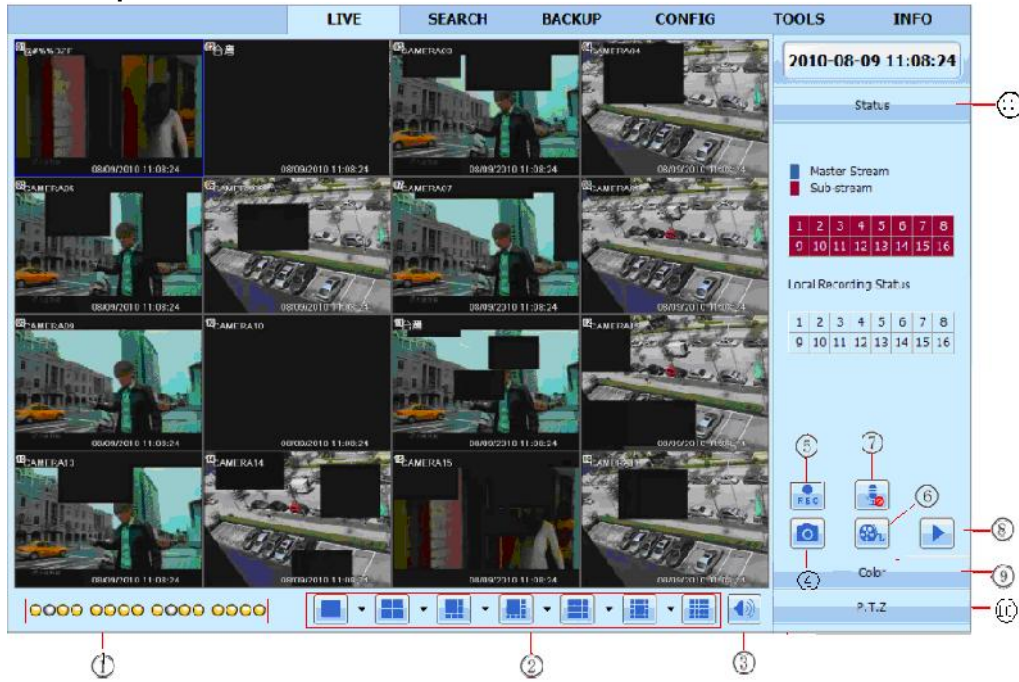


Fig 7-2 Remote live preview interface

Symbol and function Definitions:

	Channel indicator		Screen display mode		Volume
	Snapping picture		Start manual record		Start record IE
	Bidirectional talk		Playback		Color
⑩	PTZ control	⑪	Master/sub stream status		

Note: click  button to record manual and the record file will be saved in user's PC.

Screen display mode:



Click the  icon beside the screen display mode, channel select dialog will appear as below:



Fig 7-3 Channel select dialog

Take 8-channel DVR for example: user can tick off channels form 1-ch to 16-ch at random to display the live pictures, 8 channels can be selected at most. Then click OK button to confirm the setting.


Snap pictures

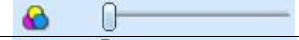

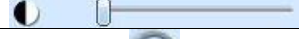


Click "Snap"  icon, the system will automatically capture pictures and save those pictures in the computer.

User should set up the save path for those picture in the Remote Preview interface→Configuration→Local configuration.

Color adjustment:

Drag the slide bar to adjust Brightness, Contrast, Hue, and Saturation. Click Default to reset them to original value.


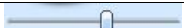







Buttons	Description
	Drag the scroll bar to adjust the brightness of channel

	Drag the scroll bar to adjust the contrast of channel
	Drag the scroll bar to adjust the saturation of channel
	Drag the scroll bar to adjust the hue of channel
	Click this button to recover the default value of brightness, contrast, saturation and hue.
	Save the adjustment

PTZ control

Please connect speed dome to the device via RS485 firstly, make sure the protocol of the speed dome is supported by the device and set the relative parameters manually. User can control the dome up, down, right, left or stop rotating on Control Center, adjust rotation speed, Iris and zoom, focus on the dome, and set the presets, etc.

Buttons definition:

Buttons	Description
	▲means the dome rotate up. ▼means the dome rotate up left. ▽means the dome rotate up right ▽means the dome rotate down. ▲ means the dome rotate left down. ▲ means the dome rotate right down. ▲ means the dome rotate left. ▲ means the dome rotate right. ■ means the dome stop rotating.
	Drag the scroll bar to adjust rotating speed of the dome.
	'Iris' button. Click + button near 'Iris' button to increase light of the dome. Click - button near 'Iris' button to decrease light of the dome.
	'Zoom' button. Click + button near 'Zoom' button to zoom in the locale picture of this camera. Click - button near 'Zoom' button to zoom out the locale picture of this camera.
	'Focus' button. Click + button near 'Focus' button to have long focus. Click - button near 'Focus' button to have short focus.
	Go to the Preset
	Select and do auto cruise
	Track
	Auto scan

Click the right mouse on the live interface, a pull-down menu will appear as below

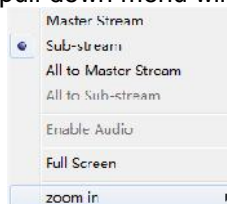


Fig 7-4 right key sub menu

Stream: this DVR supports master stream and sub stream. Master stream has higher frame rate, max 25FPS (PAL) /30 FPS (NTSC) for every channel, but it needs higher network bandwidth simultaneously; second stream has low frame rate, max 6FPS (PAL) /7FPS (NTSC) for every channel, it requires low network bandwidth. Therefore, users can select the stream according to their bandwidth.

All to master/sub stream: set all channel to master stream or sub stream.

Enable audio: enable or disenable audio


Full screen: the live preview picture will display with full screen, the tool bar will be hided; double click left mouse or click right mouse to return

Zoom in: Single channel large screen electronic amplification

Left click the channel which needs to amplify; Click the right mouse, select Zoom in button and then click the left mouse to amplify the image. Press left mouse to drug the cursor, user can view the image. Double-click the left mouse to exit. Click the right mouse to return to the main interface.

6.3 Remote playback & backup

6.3.1 Remote playback

Click  button to enter into record playback interface, refer to Fig 7-5:
 Select the record date and channels; double-click the file name in the record file list box, user can play that file and preview the picture.

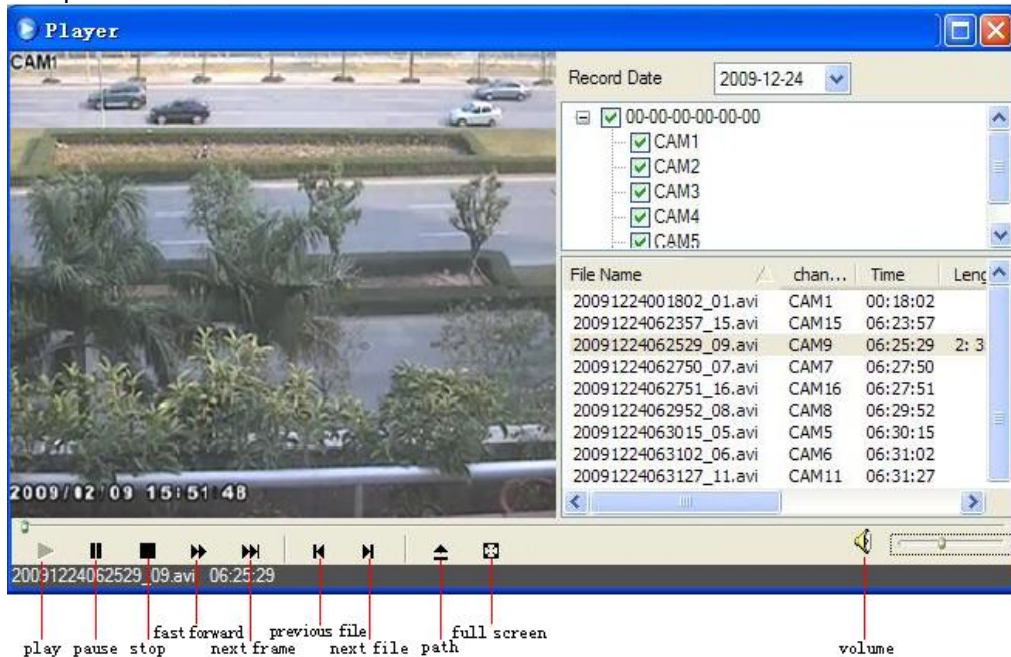


Fig 7-5 Play record file interface

This DVR supports remote time search, event search and file management.

By Time Search:

Step1: Enter into Search→time search; refer to Fig 7-6:

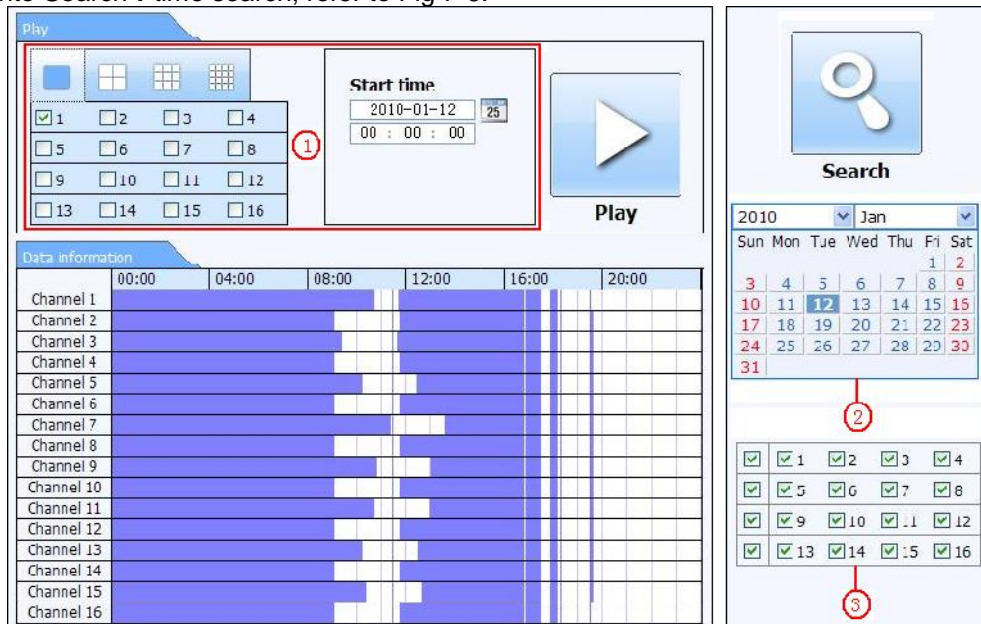


Fig 7-6 time search interface

Step2: click "Search" button. The record data will be displayed in the data information list box; the highlight date in the area means have record data, click those data;

Step3: User can set the data playing time and display mode in the area as required

Step4: Select certain item from the data information list box, click "play" button to playback

Step5: Click the relevant buttons in the interface; user can do some operations such as: FF, pause, change channel mode, research, etc. refer to Fig 7-7:

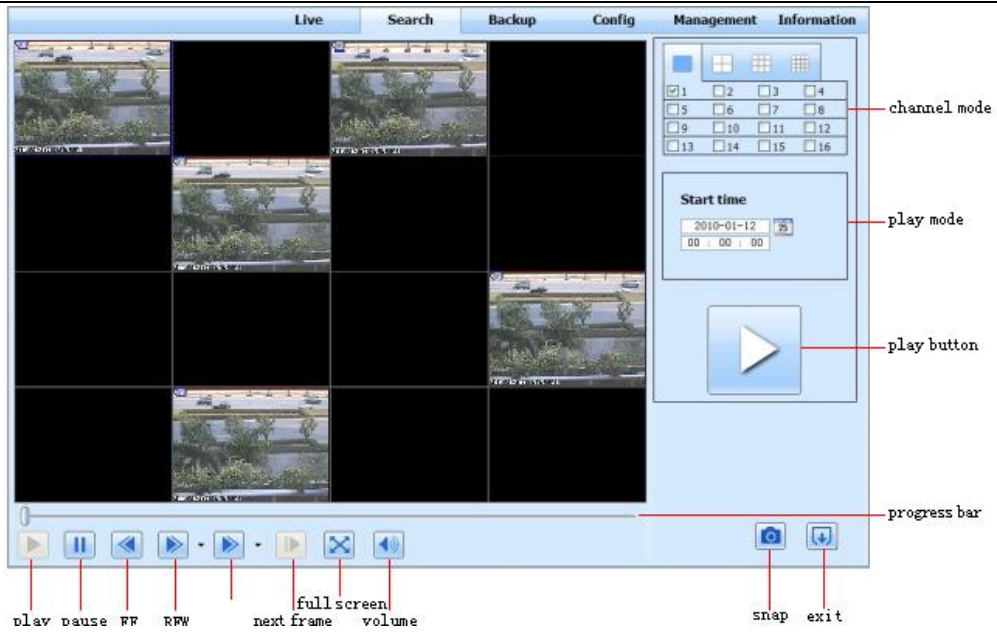


Fig 7-7 Time search playback

By Event Search:

Step1: Enter into Search→event search; refer to Fig 7-8:

CH	Start time	End time	Type
1	20:0-01-09 00:01:07	2010-01-09 00:02:15	motion
1	20:0-01-09 00:03:28	2010-01-09 01:24:11	manuz
1	20:0-01-09 00:08:36	2010-01-09 00:09:31	motion
1	20:0-01-09 00:10:10	2010-01-09 00:10:59	motion
1	20:0-01-09 00:11:30	2010-01-09 00:12:15	motion
1	20:0-01-09 00:14:40	2010-01-09 00:15:43	motion
1	20:0-01-09 00:15:45	2010-01-09 00:17:09	motion
1	20:0-01-09 01:24:11	2010-01-09 02:40:11	manuz
1	20:0-01-09 02:46:11	2010-01-09 03:19:45	manuz
1	20:0-01-09 17:39:52	2010-01-09 17:57:12	manuz
2	20:0-01-09 00:01:07	2010-01-09 00:01:53	motion
2	20:0-01-09 00:02:18	2010-01-09 00:03:01	motion
2	20:0-01-09 00:03:01	2010-01-09 00:04:12	motion
2	20:0-01-09 00:03:32	2010-01-09 00:04:27	manuz
2	20:0-01-09 00:14:22	2010-01-09 00:15:03	motion
2	20:0-01-09 00:21:54	2010-01-09 00:22:35	motion
2	20:0-01-09 00:23:51	2010-01-09 00:24:33	motion
2	20:0-01-09 00:25:12	2010-01-09 00:25:54	motion
2	20:0-01-09 00:26:57	2010-01-09 00:28:13	motion
2	20:0-01-09 00:31:48	2010-01-09 00:32:30	motion

1/31

Search

2010 Jan

Sun	Mon	Tue	Wed	Thu	Fri	Sat
					1	2
3	4	5	6	7	8	9
10	11	12	13	14	15	16
17	18	19	20	21	22	23
24	25	26	27	28	29	30
31						

1 2 3 4
 5 6 7 8
 9 10 11 12
 13 14 15 16

Motion
 Sensor

Fig 7-8 event search interface

Step2: click the highlight date and select record channels and then tick off the event type: motion and sensor, click "search" button

Step3: the events will be display in the event list box, double-click certain item to playback

File Management

Step1: Enter into Search→file management; refer to Fig 7-9:

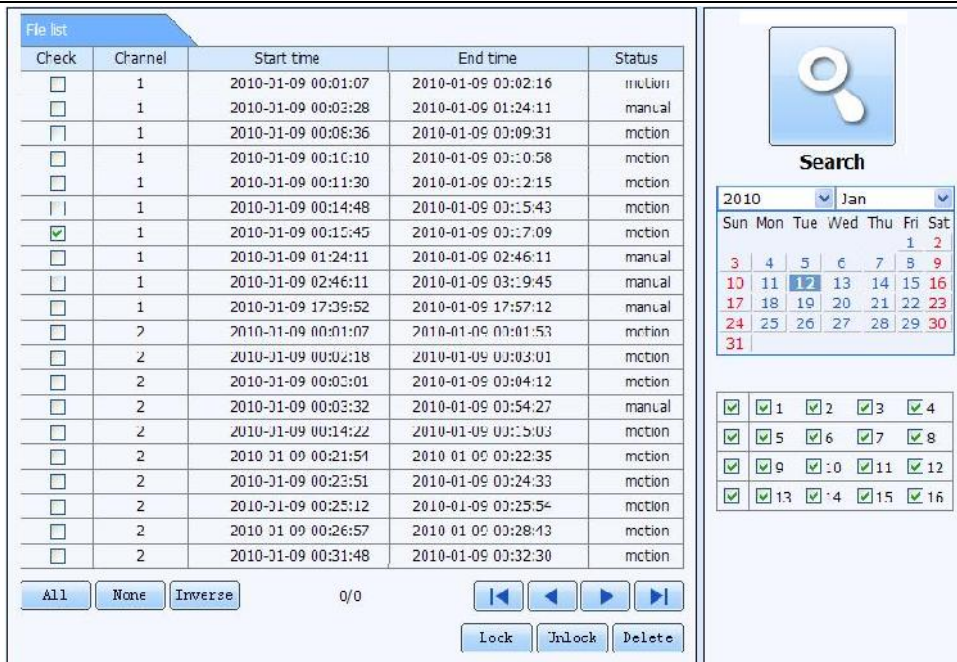


Fig 7-9 file management interface

Lock: select certain file item in the file list box, click “Lock” button to lock this file that can not be deleted or overlaid

Unlock: select a locked file, click “unlock” button to unlock this file

Delete: select an unlock file, click “delete” button to delete this file from file list

6.3.2 Remote backup

Click Backup button to enter into backup interface, refers to Fig 7-10:

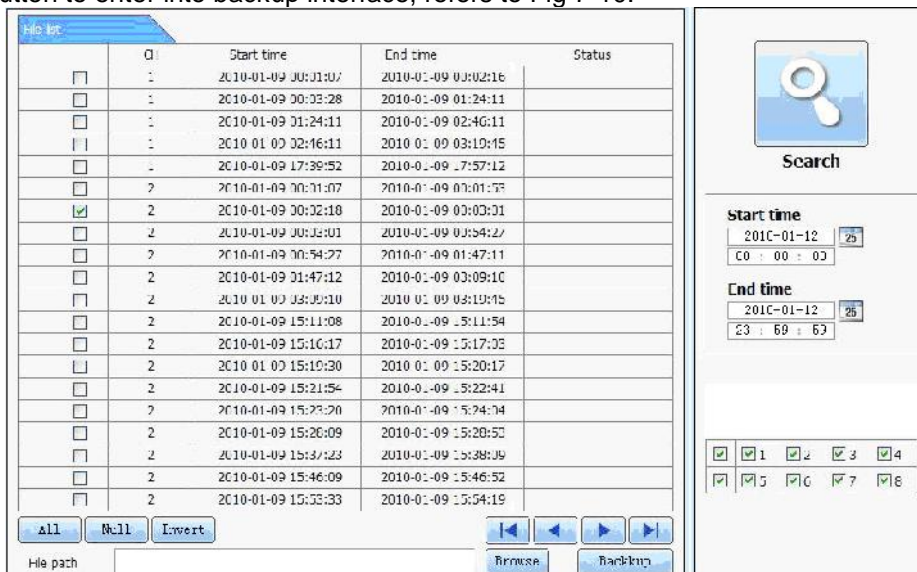


Fig 7-10 remote backup interface

Step1: select channels, set the start and end time, then click “search’ button, the file information will be displayed in the file list box

Step2: select backup files, click “browse” button to set the save path, and then click “backup” button to start backup. The backup files will be saved on user’s PC.

6.4 Remote System configuration

User can remote setup the parameters of the device. Functions of remote configurations include: basic configuration, live configuration, record configuration, schedule configuration, alarm configuration, network configuration, PTZ configuration and user configuration. User should firstly select an item in the menu list on the left, and then setup the relative parameters. When one user setup parameters of a certain item, others cannot setup this one. Click Config to enter into the below interface refer to Fig 7-11:



Fig 7-11 remote menu setup

The sub menu lists and the options in every item are similar with those on the DVR. Please refer to Chapter 3 Main Menu Setup Guide for more details.

Click “Apply” button to save above settings; click “default” button will recover the original settings.

6.5 Remote Management

Remote Information Search

The system will automatically record the working condition and operation process during the period of work. User can view information, such as username, IP address and so on. Enter into INFO Log, user can set the start time to view the log record as follows:

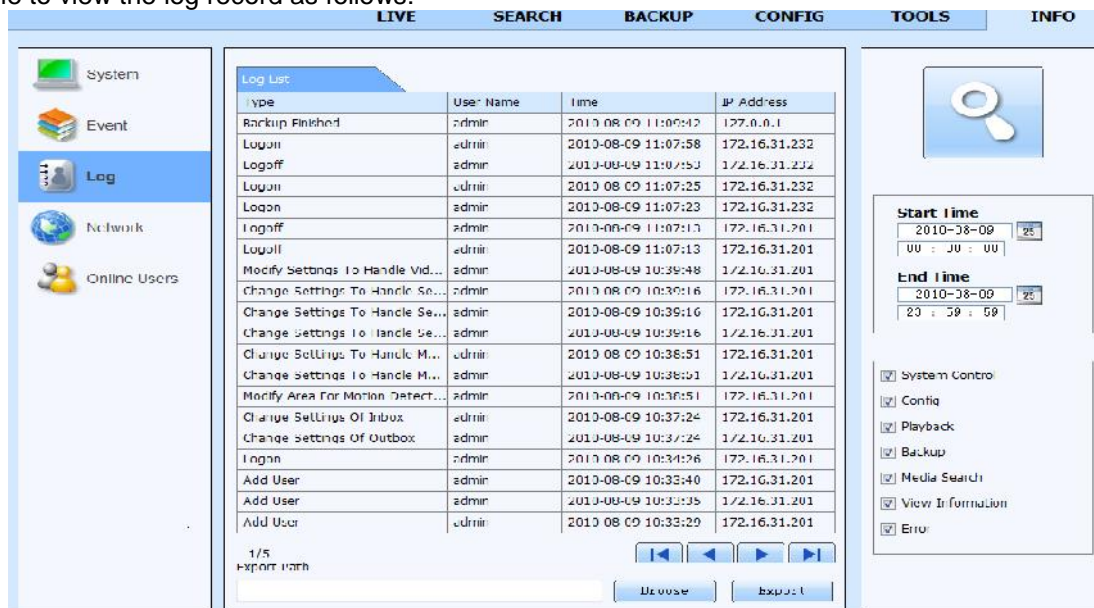


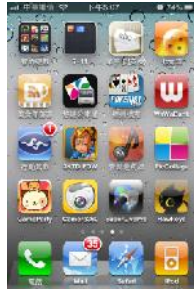
Fig 7-12 Remote information search

This DVR supports mobile surveillance on Iphone and android OS device, this section describes the installation of the program via the smartphone

7.1 Installation procedure on Iphone device

At present, the software only supports version of iPhone iOS 3.1.2 and above, if phone firmware lower than this version please upgrade it. Below is the operation method for iPhone mobile clients:

Step1 : Enter into App Store function of iPhone



Step 2: Enable “search”  function to search “SuperLivePro”, the required programs will be displayed on the top of search box



Step 3: Click SuperLivePro, enter into “introduce” interface and click FREE”, it will change into “INSTALL”



Step 4: Enter into iTunes Store password, click “OK” will display below interface

Note: if it was the first time for user to operate please enter into user ID; if there is no Store account, user need to apply one.







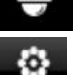





Step 5: Just be patient to download and install. After installed, "SuperLivePro", icon will display. Click this icon, a function interface will appear

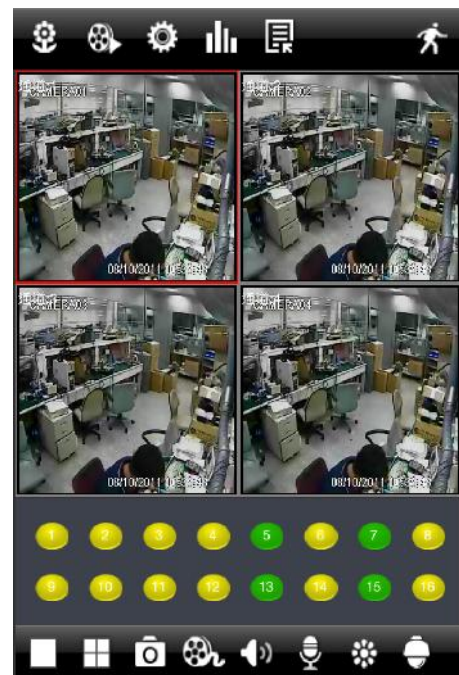


Step 6: Key in server's IP address (or domain name), user's ID and password. Click Login to process.



Step 7: The default quad view window will be displayed. The functions descriptions as following,

- 7.1 Click  or  to view different channel.
- 7.2 Click  then click "OK" to capture picture.
- 7.3 Click  to do local record.
- 7.4 Click  to get audio from DVR.
- 7.5 Click  to send voice to DVR
- 7.6 Click  to do camera color adjustment.
- 7.7 Click  to do PTZ operation.
- 7.8 Click  to view picture.
- 7.9 Click  to do local & remote playback.
- 7.10 Click  to do DVR remote setting.
- 7.11 Click  to view DVR information.
- 7.12 Click  to edit DVR list.
- 7.13 Click  to setup motion area.



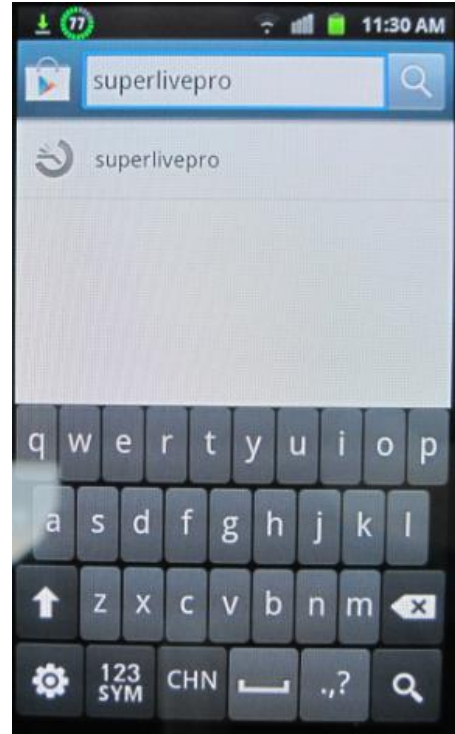
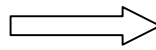
7.2 Installation procedure on Android OS smartphone



On your smartphone click on the google play store icon

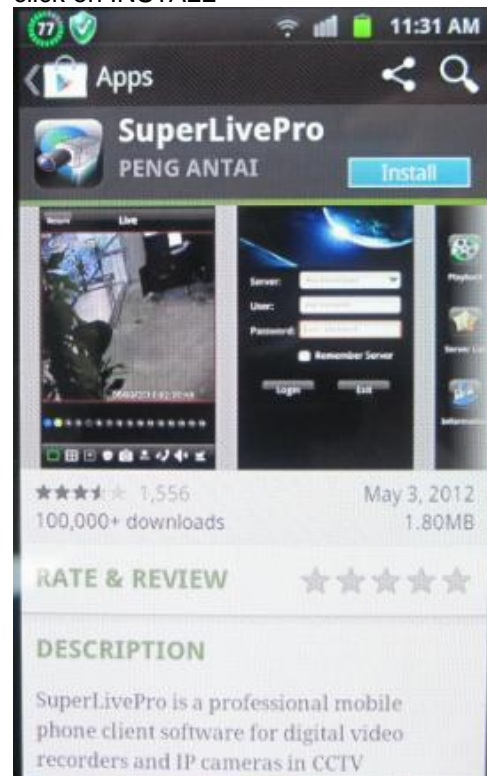
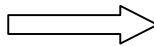
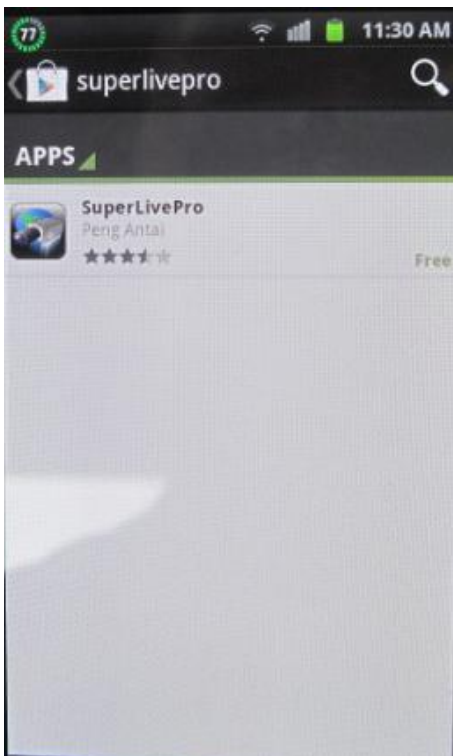
Then press on search icon on right

Type SUPERLIVEPRO with your virtual keyboard and press enter

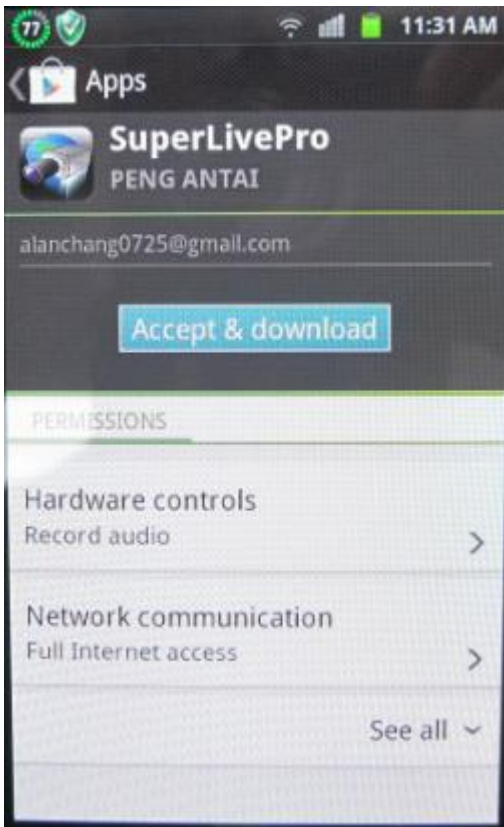


The search result will show the available applications

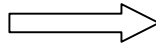
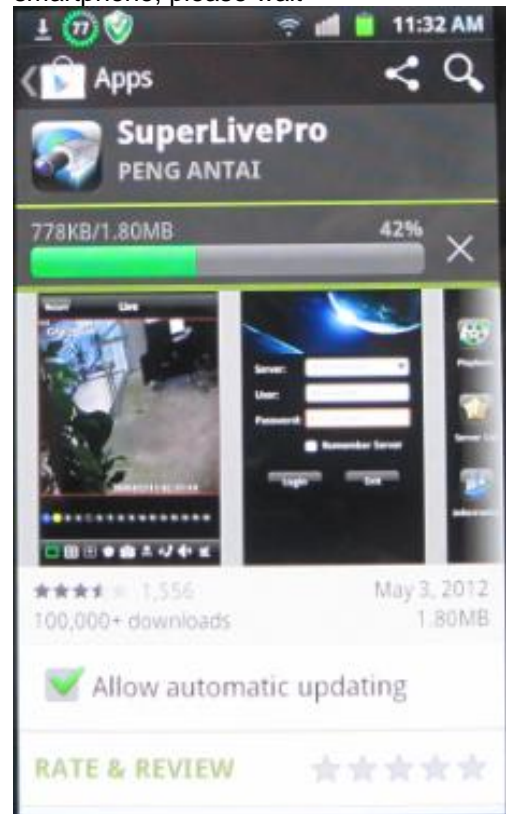
Click on SUPERLIVEPRO, a brief description of the program will be shown, click on INSTALL



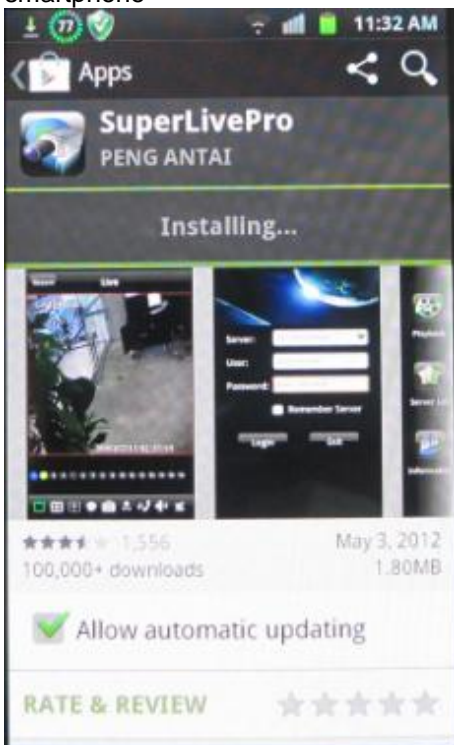
Click on ACCEPT & DOWNLOAD



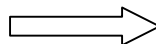
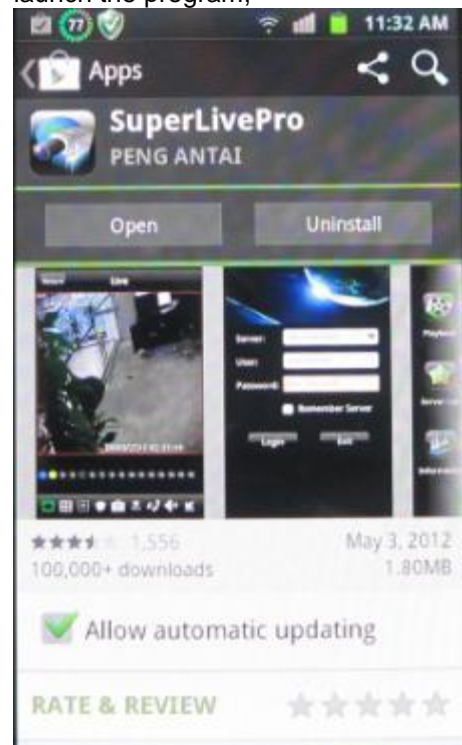
The program is being downloaded on your smartphone, please wait



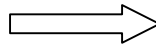
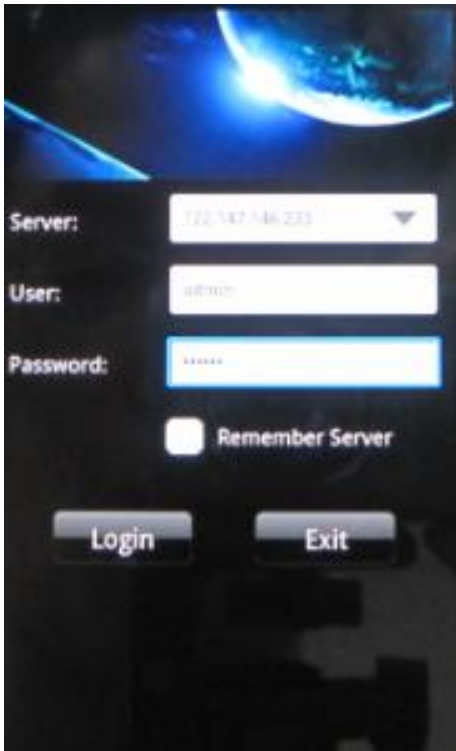
The program is being installed on your smartphone



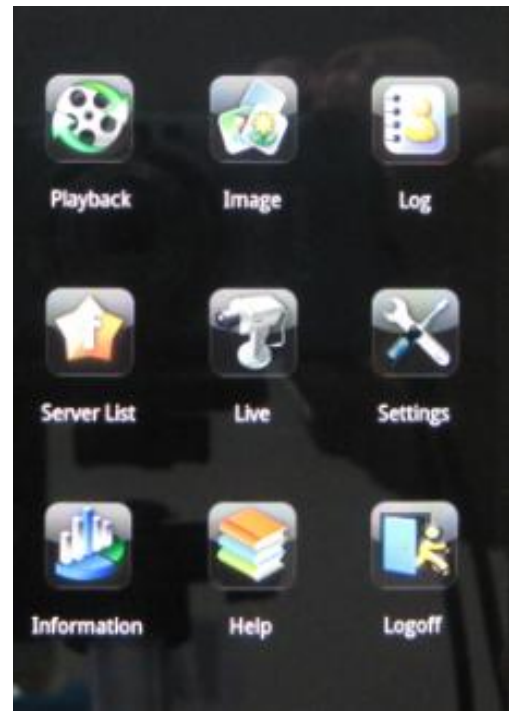
The installation is finished, click Open to launch the program,



Key your DVR IP, the username and password, if you want the program to keep in memory select REMEMBER SERVER, then click on LOGIN



You are connected to the DVR, you can see all the functions of the program



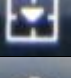

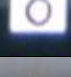






Main interface description

Item	Description
Playback	Video file playback
Image	Server photo browse
Log	Software log
Server list	View and edit server list
Live	View camera online
Settings	Software configure
Information	Server and software information
Help	Help Information about software and FAQ
Logoff	Log off from current server

Live picture interface



Icon	Description
	One screen
	Four screen
	Channel configure
	PTZ control
	Capture
	Record
	Talk
	Channel audio
	Hide Superlivepro

Appendix A FAQ

Q1. Why the DVR cannot start after connected to the power?

- a. The adapter has been damaged. Please change an adapter
- b. The power of the adapter is not enough. Please remove the HDD to check
- c. Hardware problem

Q2. There is not menu output or only has live image display

- a. Check up whether other devices can display menu or long press ESC key to wait for login dialog box to appear.

Q2. The indicator of the DVR lights, but no output. Why?

- a. The power of the adapter is not enough. Please remove the HDD or change an adapter to try.
- b. The video format of the DVR is different from that of the monitor.
- c. Connection problem. Please check the cable and the ports of monitor and DVR.

Q3. Why are no images displayed on parts or all of the channels of the DVR?

- a. Connection problem. Please check the cable and the ports of camera and DVR.
- b. Camera problem. Please check the cameras.
- c. The video format of the DVR is different from that of the cameras. Please change DVR system format.

Q4. Cannot find HDD

- a. The power of the adapter is not enough. Please change an adapter to try.
- b. Connection problem. Please check the power and data cables.
- c. The HDD is damaged. Change a new one.

Q5. Cannot record

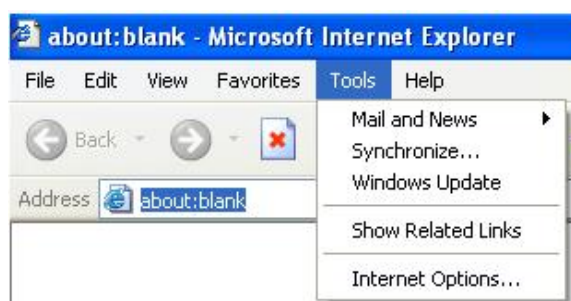
- a. Don't format HDD. Please format it manually first.
- b. Don't enable record function or incorrect setup. Please refer to Chapter 5 Record search & playback and backup.
- c. HDD is full and not enables recycle function. Please refer to 4.3 Record configuration. Change a new HDD or enable recycle.
- d. The HDD is damaged. Change a new one.

Q6. Cannot use mouse.

- a. wait 1-2 minutes after mouse connected.
- b. Not detected. Plug/unplug several times.
- c. The mouse is incompatible. Please change a mouse.

Q7. Cannot download ActiveX control.

- a. IE browser blocks activeX. Please do setup following below.
Open IE browser. Click Tools-----Internet Options....



select Security-----Custom Level....Refer to Fig 7-1

Enable all the sub options under "ActiveX controls and plug-ins" refer to Fig 7-2

Then click ok to finish setup.

- b. Other plug-ins or anti-virus blocks ActiveX. Please uninstall or close them.

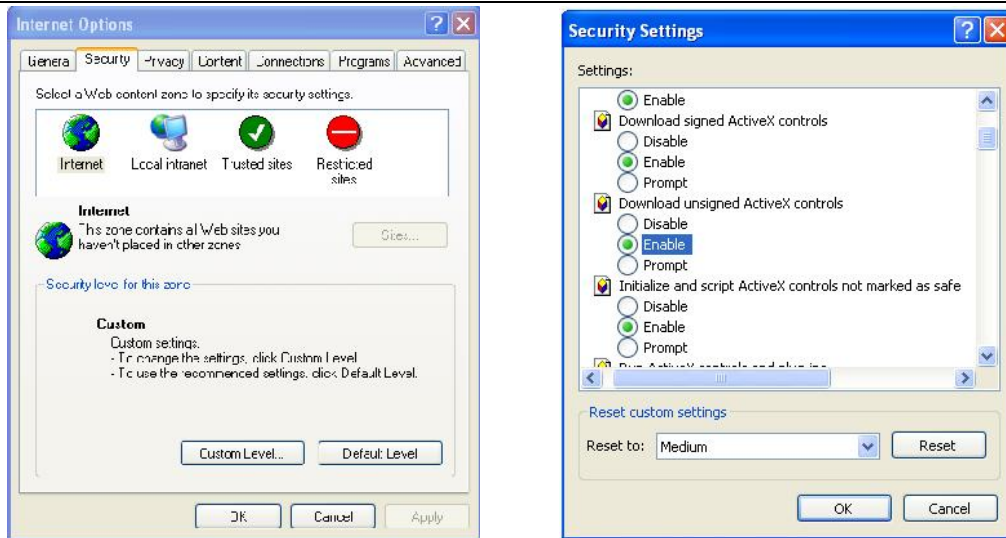


Fig7-1

Fig7-2

Q8: How to deal with when DVR starts, it displays “please wait...”all the time

First possible reason: hard-disk cable and data cable are not well connected.

Solution: Please check the connection of hard-disk cable and data cable and make sure they are well connected; If still not working, please unplug them and then try re-plugging again;

Second possible reason: It is forced to stop because hard disk has disabled track which causes the system checking hard disk cannot skip

Solution: Change another new hard disk or reformat the broken one

Q9: How to input password and digital numbers

The method to input password and digital numbers is to click the box behind *password* or *items* needing to input by numbers, and then the small keyboard will appear. Please select number or letter to input (the initial password is 123456), or you can use the digital keys in the front panel, or the digital keys on the remote controller.

Q10: How to upgrade when added new functions or revised software

After getting the upgraded software from manufacturer, please copy it into U disk, and then select “*upgrade*” in the menu. If upgrading the kernel procedure, please refer to the following method: firstly insert U disk into DVR, and then input “adsws” in the password of system login and the system will upgrade kernel procedure automatically. After finished, please restart DVR to achieve.

Notice: Do not power off in the system upgrading process! Otherwise, it may cause that DVR cannot start.

Q11: Why is the hard disk used in a DVR identified a new hard disk if directly used to another same type DVR? And why must we format it again?

When DVR only uses one hard disk, the hard disk removed from one to another same type DVR can work normally without format. However, when a DVR adds to a new hard disk, it will identify the hard disk as a new one and inquire whether to format no matter whether this hard disk used or not in another same type DVR before. In this condition, it can be used normally after formatted according to the guide; if two or more hard disks used in different DVRs, when used in another DVR with the same type, they will be identified to be two or more new hard disks, and all of them need to format. In general, please do not try using more disks removed from different DVRs into another one in case the data lose.

Q12: What are the minimum configurations of PC for clients connecting?

PC Module	Parameters
CPU	Intel Celeron 2.4G
Motherboard	Intel 845
HDD	80G
RAM	512M
VGA	NVIDIA GeForce MX440/FX5200 ATIRADEON 7500/X300
OS	Windows 2000(SP4 above) /Windows XP(SP2 above) /VISTA/SEVEN
DirectX	9.0

Q13: What are the PC configurations for 8-ch real time product with fully open channel mainstream?

PC Module	Parameters
CPU	Intel Core(TM)2 Duo CPU E4600
Motherboard	G31/P31 chip
HDD	80G
RAM	1GB
VGA	GMA3100/NVIDIA GeForce 8400/ ATI RADEON HD3450
OS	Windows 2000(SP4 above) /Windows XP(SP2 above) VISTA/ SEVEN
DirectX	9.0

Appendix B Calculate Recording Capacity

Users can calculate the required size of hard disk according to the total recording duration and DVR recording settings. The DVR uses fixed video bit rate. The below are the details at different settings for CBR.

Resolution	Frame Rate Totally(FPS)	Video Quality	Bit Rate (kbps)	Used Space(MB/h)
1080P	6(PAL)/ 7(NTSC)	Highest	12M	1350
		Higher	9M	1013
		Medium	7M	788
		Low	6M	675
		Lower	4M	450
		Lowest	1.5M	169
	12(PAL)/ 15(NTSC)	Highest	12M	2700
		Higher	10M	2250
		Medium	8M	1800
		Low	6M	1350
		Lower	2M	450
		Lowest	1.5M	338

The calculation format is: **Total Recording capacity =Used space per hour (MB/h) (coverage rate of hard disk) × recording time (hour) ×channel numbers**

For instance, one customer uses PAL cameras, set resolution to 1080P, video quality to Lowest, frame rate to 6 fps for enabling total 4channels. He wants the unit to record continuously in a month. Below is the calculation:

Total Recoding capacity =169 (mb/h) X 24(hours/day) X30(days) X4(channels)= 486720 (MB) 475(GB)

Therefore, customers need to install one SATA HDDs with 500GB for one month record.

Appendix C Compatible Devices

Compatible Devices

1. Compatible USB drive after test.

Brand	Capacity
A-DATA	512MB, 1G, 2GB
Transcend	4GB
Kingston	2GB
Toshiba	2GB
SanDisk	4GB

2. Compatible external USB CD/DVD writers after test

Brand	Model
LG	GH24NS90

3. Compatible HDD

Brand	Model number	Capacity
WESTERN DIGITAL	1600AAJS FW:00L7A0	160GB
	2500AVVS FW:73M8B0	250GB
	3200AVVS	320GB
	5000AVDS FW:63U7B0	500GB
	5000AVJS FW:63YJA0	500GB
	5000AVVS FW:63M8B0	500GB
	5000AAKS FW:00V1A0	500GB
	5000BUDT (2.5") FW:63G8FY0	500GB
	5000AUDX FW:63WNHY0	500GB
	10EURS FW:630AB1	1TB
	10EVDS FW:63U8B0	1TB
	15EARS FW:00Z5B1	1.5TB
	15EURS FW:63S48Y0	1.5TB
	20EVDS FW:63T3B0	2TB
	20EARS FW:00S8B1	2TB
	2001FASS FW:00U0B0	2TB
HITACHI	HDS721616PLA380	160GB
	HCT721025SLA380	500GB
	HCP725050GLA380	500GB
	HDP725050GLA360	1TB
SEAGATE	ST500DM002 (SATA3) FW:KC44	500GB
	ST3100528AS FW:CC38	1TB
	ST31000524AS (SATA3) FW:JC4B	1TB
	ST2000DL003 (SATA3) FW:CC32, CC3C	2TB
TOSHIBA	HCS5C1050DLE630 FW:620 DT01ABA050V	500GB
	DT01ABA100	1TB
	DT01ACA100	1TB

APPENDIX D DDNS setup procedure (Take www.geekciti.com as an example)

1. Visit www.geekciti.com and register new account by filling each line then press submit, you need to have a valid email which will be use as username

DDNS account creation.

NEW USER REGISTRATION	
EMAIL ADDRESS	<input type="text" value="dvrtest110@gmail.com"/>
PASSWORD	<input type="password" value="....."/> ?
PASSWORD CONFIRM	<input type="password" value="....."/>
FIRST NAME	<input type="text" value="aloun"/>
LAST NAME	<input type="text" value="chen"/>
SECURITY QUESTION	<input type="text" value="Favorite Food"/>
ANSWER	<input type="text" value="pizza"/>
CONFIRM YOU ARE HUMAN	<p>7+4=</p> <p>New Captcha</p> <input type="text" value="5"/> <p>Solve the problem above</p>
<input type="button" value="Submit"/> <input type="button" value="Reset"/>	

2. Create a domain name as your convenience and choose the extension among the list available, then click on REQUEST DOMAIN

You must create a domain name to continue.

Domain name must start with (a-z, 0-9), Cannot end, nor start, but may contain a hyphen, and is not case-sensitive.

 .

- If the domain exists already you will have to choose another domain name, if not you will see the below screen

Your domain was successfully created.

Search by domain

Click a name to edit your domain settings

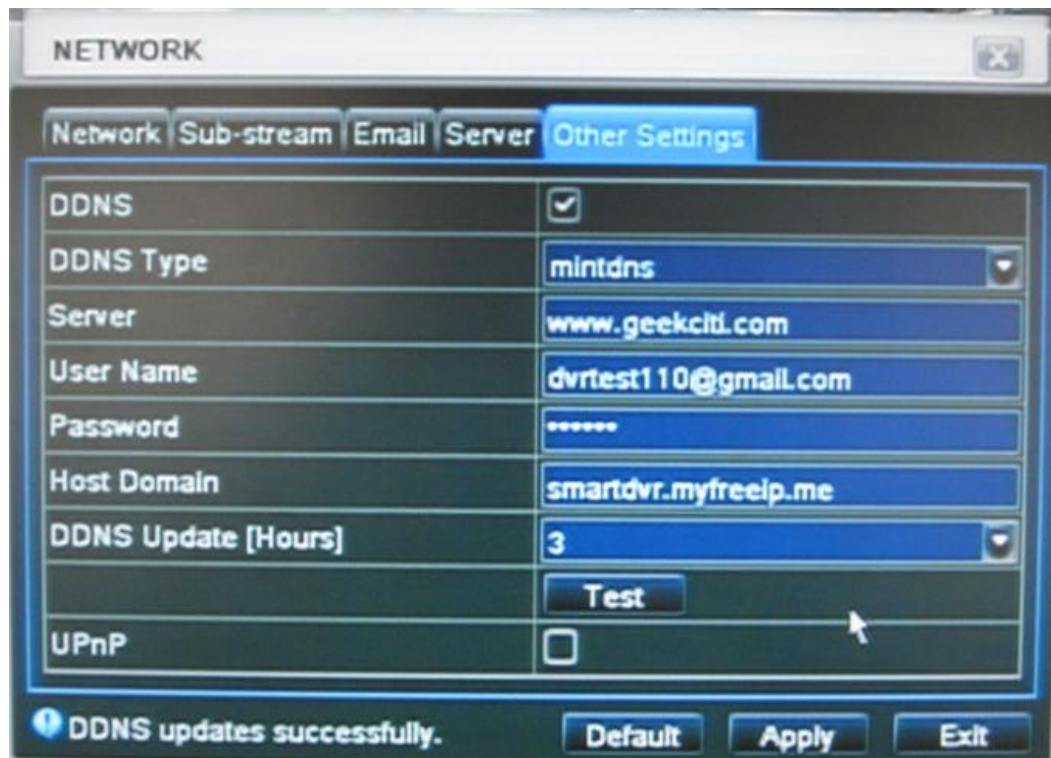
NAME	STATUS	DOMAIN
SMARTDVR	✔	smartdvr.myfreeip.me

Last Update: *Not yet updated* IP address: 59.124.207.207

[Create additional domain names](#)

[1]

- Fill all setting on DVR then click “Test” to verify. Then click “Apply” to Finish DVR network setting. (Menu-> Network -> Other Settings)



DDNS: enabled
 DDNS Type: mintdns
 Server www.geekciti.com
 User Name: dvrtest110@gmail.com (your account on www.geekciti.com website, as step 1)
 Password: xxxxxx (your account password on www.geekciti.com website, as step 1)
 Host Domain: smartdvr.myfreeip.me (you create on www.geekciti.com website, as step 2)
 Update Interval [M]: 3 (a time period to sync with www.geekciti.com service)
 (3 means 3 hours)

Press TEST button, if it's ok you will see **DDNS updates successfully** message

- You could also visit GEEKCITI website to check if the setting works.

Click a name to edit your domain settings

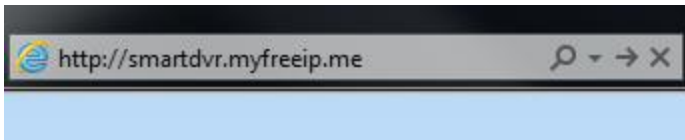
NAME	STATUS	DOMAIN
SMARTDVR		smartdvr.myfreeip.me

Last Update: 1/16/2013 11:32:13 PM IP address: 60.250.221.50

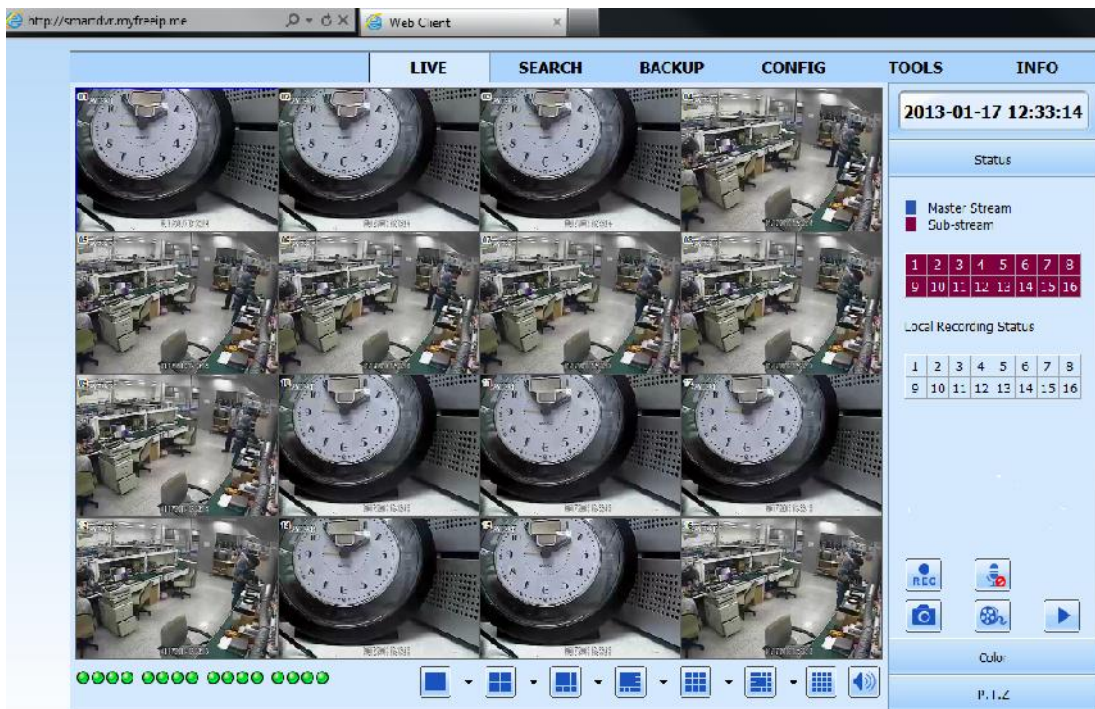
Create additional domain names

[1]

You can test with a computer with internet explorer browser by key in the new domain name



You will see the DVR main page, after key in the username and password as well the display language, you should be able see camera live display



4 CH HD DVR Specifications

Compression format	H.264 Main Profile
Video output	CVBSx1, HDMIx1, VGAx1
Video Input	SDIx4
HDMI/VGA Resolution	1080P/1280*1024 /1024*768/ 800*600
Record Resolution	1080P(1920x1080)
Display Frame Rate	100FPS (PAL), 120FPS (NTSC)
Record Frame Rate	25FPS (PAL), 30FPS (NTSC)
Audio Input	RCA X4
Audio output	RCA X1
Alarm Input	NO or NC 4 CH
Alarm output:	4 CH
Record Mode	Manual / Sensor /Timer / Motion detection
Simplex/Duplex/Triplex	Pentaplex
Network Interface	RJ45 (LAN, INTERNET)
PTZ control	YES
Communication interface	RS485, USB2.0 x 2 (one for backup, another for USB mouse)
Disk info	SATA x 1+DVD-RW x 1 or SATA x 2
Remote controller	YES
Power Supply	12V
Temperature	0°-50°C
Humidity	10%-90%
Average Operating Power (Excluding HDD)	30W

8 CH HD DVR Specifications

Compression format	H.264
Video output	CVBSx1, HDMIx1, VGAx1
Video Input	SDIx8
HDMI/VGA Resolution	1080P/1280*1024/ 800*600
Record Resolution	1080P(1920x1080)
Display Frame Rate	200FPS (PAL), 240FPS (NTSC)
Record Frame Rate	100FPS (PAL), 120FPS (NTSC)
Audio Input	RCA X8
Audio output	RCA X1
Alarm Input	NO or NC 8CH
Alarm output:	4CH
Record Mode	Manual / Sensor /Timer / Motion detection
Simplex/Duplex/Triplex	Pentaplex
Network Interface	RJ45 (LAN, INTERNET)
PTZ control	YES
Communication interface	RS485, USB2.0 x 2 (one for backup, another for USB mouse)
Disk info	SATA x 4+DVD-RW x 1 or SATA x 8; E-SATA x2
Remote controller	YES
Power Supply	110V-220V
Temperature	0°-50°C
Humidity	10%-90%
Average Operating Power (Excluding HDD)	40W

16 CH HD DVR Specifications

Compression format	H.264
Video output	CVBSx1, HDMIx1, VGAx1
Video Input	SDI x16
HDMI/VGA Resolution	1080P/1280*1024 / 800*600
Record Resolution	1080P(1920x1080)
Display Frame Rate	400FPS (PAL), 480FPS (NTSC)
Record Frame Rate	200FPS (PAL), 240FPS (NTSC)
Audio Input	RCA X16
Audio output	RCA X1
Alarm Input	NO or NC 16CH
Alarm output:	4CH
Record Mode	Manual / Sensor /Timer / Motion detection
Simplex/Duplex/Triplex	Pentaplex
Network Interface	RJ45 (LAN, INTERNET)
PTZ control	YES
Communication interface	RS485, USB2.0 x 2 (one for backup, another for USB mouse)
Disk info	SATA x 4+DVD-RW x 1 or SATA x 8; E-SATA x2
Remote controller	YES
Power Supply	110V-220V
Temperature	0°-50°C
Humidity	10%-90%
Average Operating Power (Excluding HDD)	40W